

Maple Syrup Production

Dr. Robert Hansen

Extension Educator - Forest Resources/Maple Products



Check Your Forest

- Need Sugar Maple
- Trees > 10" DBH
- Objectives: Timber vs. Sugar



How Much to Make?

- Market
- Personal Use



How Many?

- Each Tap (5/16) = 1/3 gallon of syrup
 - More taps per tree doesn't necessarily mean more syrup per tree over long-term
- Rule of 86 Sap = 86/%
- Plan layout of collection system before tapping

Tapping Guidelines

- 5/16" (health) tap
- Minimum size: 10 inches diameter breast height (dbh)
- New research indicates one tap per tree may be sufficient

Tapping Guidelines (cont'd)

- Tap hole depth: 1 to 1 1/2”
- Avoid tapping in previously tapped area
 - 2 – 4” on either side or 12” up and down



Drill



Tapping



Tapped Tree



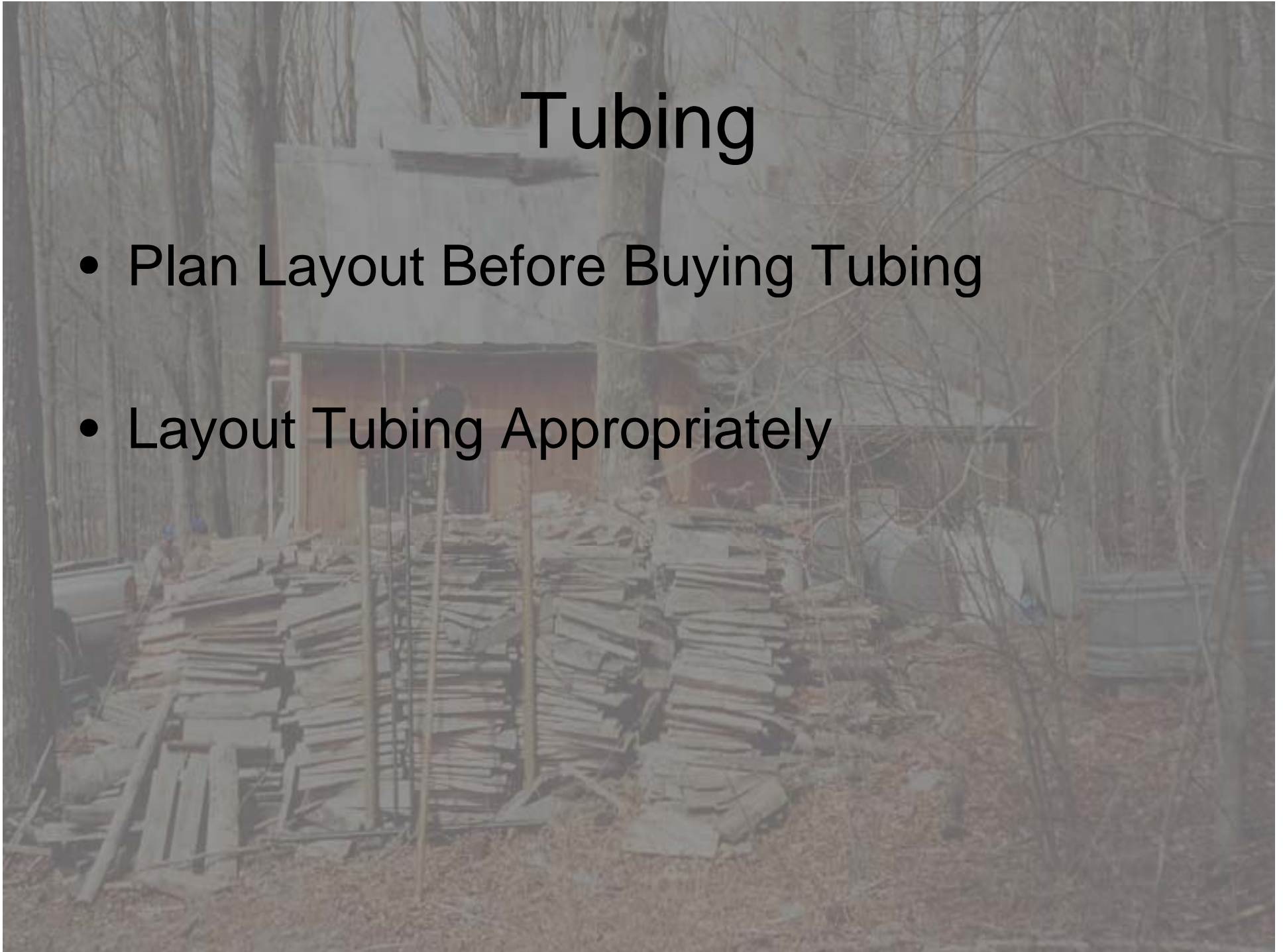
Collection

- Buckets
- Bags
- Tubing (minimum 1% slope)



Tubing

- Plan Layout Before Buying Tubing
- Layout Tubing Appropriately



Ground

- Less complicated
- Fewer Options
- Less efficient sap flow



Aerial System

- More efficient
- Better Sap Flow
- More Work in Layout



Tubing Layout

- Mainline Straight and Downward Angle
 - Layout Mainline First
 - Mainline Across Slope Will Work Well
- 5/16" Rgt. Angles to Mainline and Down
 - Maximum 10 Taps per lateral
 - Laterals Work Better Down Slope

Sap Collection



Sugar House



Small Evaporator



Large Evaporator



Filtering Syrup



Properly Graded



Pack Hot

- At Least 180°F
- Sterile & Vacuum Seal



Consistent Flavor:
Taste is what matters!



Help?!

- Penn State Cooperative Extension
<http://maplesyrup.cas.psu.edu>
- Cornell Cooperative Extension
<http://maple.dnr.cornell.edu>
- Publications
- Other Producers

Contact Information

Bob Hansen

Bradford County Cooperative Extension

701 South Fourth Street

Towanda, PA 18848

570-265-2896

rsh7@psu.edu

PENNSTATE



- Where trade names appear, no discrimination is intended, and no endorsement by Penn State Cooperative Extension Service is implied.
- Penn State encourages persons with disabilities to participate in its programs and activities. If you anticipate needing any type of accommodation or have questions about the physical access provided, please contact the Extension Office at 265-2896, 10 working days in advance of your participation or visit.
- The Pennsylvania State University is committed to the policy that all persons shall have equal access to programs, facilities, admission, and employment without regard to personal characteristics not related to
- ability, performance, or qualifications as determined by University policy or by state or federal authorities. It is the policy of the University to maintain an academic and work environment free of discrimination, including harassment. The Pennsylvania State University prohibits discrimination and harassment against any person because of age, ancestry, color, disability or handicap, national origin, race, religious creed, sex, sexual orientation, or veteran status. Discrimination or harassment against faculty, staff, or students will not be tolerated at The Pennsylvania State University. Direct all inquiries regarding the nondiscrimination policy to the Affirmative Action Director, The Pennsylvania State University, 328 Boucke Building,
- University Park, PA 16802-5901, Tel 814-865-4700/V, 814-863-1150/TTY..