

Restoration of Degraded Woodlots



Kimberly Bohn, Ph.D.
Forestry Extension Educator

 **PennState Extension**
extension.psu.edu

Outline

- Identifying degraded woodlands
- Assessing condition of degraded woodlands
- Management options for salvage/restoration

 PennState Extension

What are “degraded” woodlands?

- Woods with a reduced ability to provide **resources** or **ecosystem services/function**
- Reduced growth rates
 - Wood production
 - Nutrient cycling
 - Water balance
 - Habitat

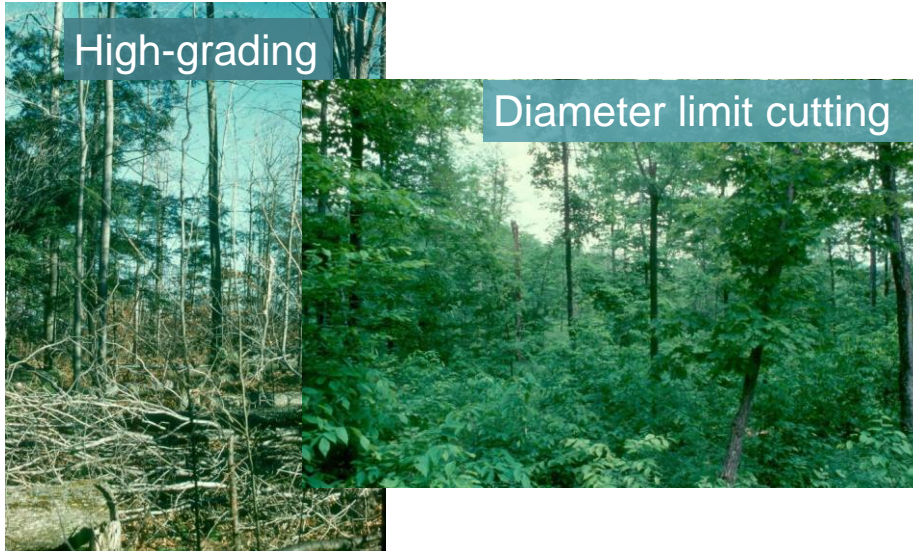


How do woodlands become “degraded”?

- Nature



How do woodlands become “degraded”?

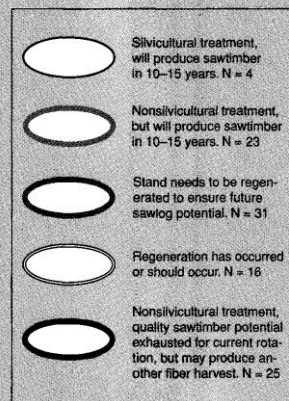


 PennState Extension

How common are these practices?

- In West Virginia survey:
 - 72 of 99 stands could not support sustainable harvest of high-quality sawlogs

Figure 1. Decision chart for classifying harvest types of 99 hardwood stands in West Virginia. Preharvest and postharvest stand characteristics are compared, and classification is based on changes in stand structure.



(Fajvan et al. 1998)

How common are these practices?

- In PA and NY:

		Outcome		
		Sustainable	Possibly Sustainable	<u>Unsustainable</u>
P r a c t i c e	Sustainable	Group 1 n=41* (48%)		
	Possibly Sustainable		Possibly Sustainable n=4 (6%)	
	<u>Unsustainable</u>			Group 2 n=40 (47%)

* Number of tracts on which THAAT reached agreement

(Pell, J.A. 1997. Variables Characterizing Timber Resource Sustainability of Recently Harvested Tracts Across Pennsylvania. School of Forest Resources, Penn State University (unpub. thesis)





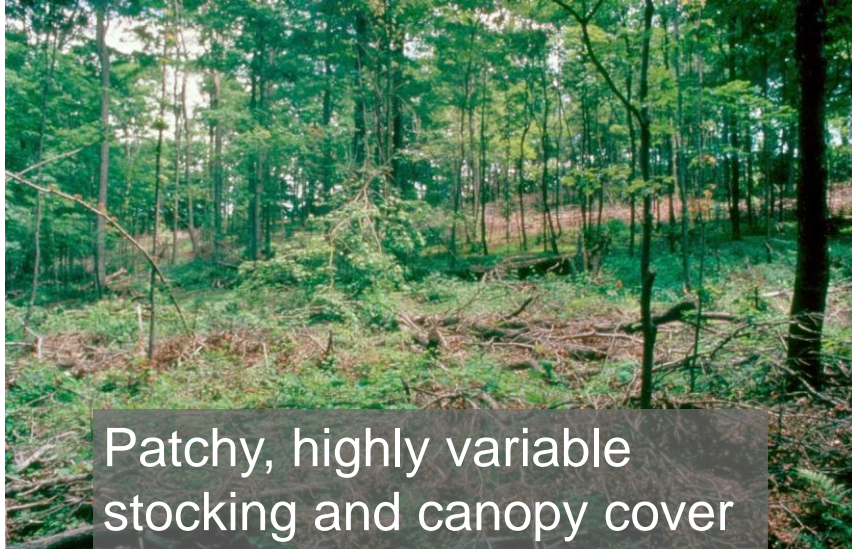
Characteristics of degraded woodlands



Characteristics of degraded woodlands



Characteristics of degraded woodlands

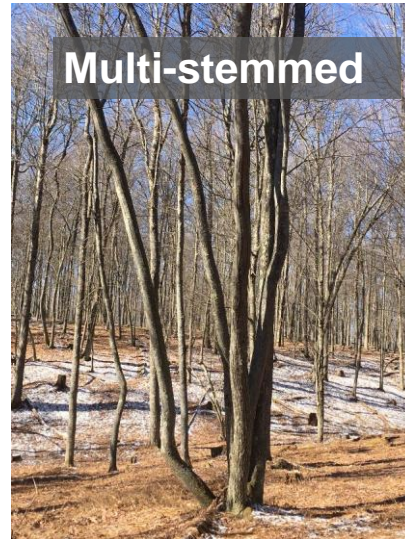


Characteristics of degraded woodlands

- Logging damage



Trees left in degraded woodlands



PennState Extension

Trees left in degraded woodlands

- Reduction in tree quality and grade

Treatment	Tree grade			
	Grade 1	Grade 2	Grade 3	Below grade
Medium selection	32(7.2) <i>a</i>	34(5.3) <i>ab</i>	24(5.3) <i>c</i>	10(4.6) <i>b</i>
Light selection	32(4.0) <i>a</i>	25(4.6) <i>bc</i>	31(4.9) <i>bc</i>	12(4.3) <i>b</i>
Heavy selection	19(4.2) <i>b</i>	43(5.5) <i>a</i>	36(3.6) <i>abc</i>	2(1.7) <i>b</i>
Crop tree release	17(4.1) <i>b</i>	34(5.4) <i>ab</i>	39(6.8) <i>ab</i>	10(3.0) <i>b</i>
Control	12(3.7) <i>bc</i>	25(3.5) <i>bc</i>	26(5.4) <i>bc</i>	37(4.5) <i>a</i>
Diameter-limit	5(2.3) <i>c</i>	14(2.7) <i>c</i>	50(4.9) <i>a</i>	31(4.0) <i>a</i>

(Sendak et al. 1995)

Trees left in degraded woodlands



Prospects for a degraded woodland?

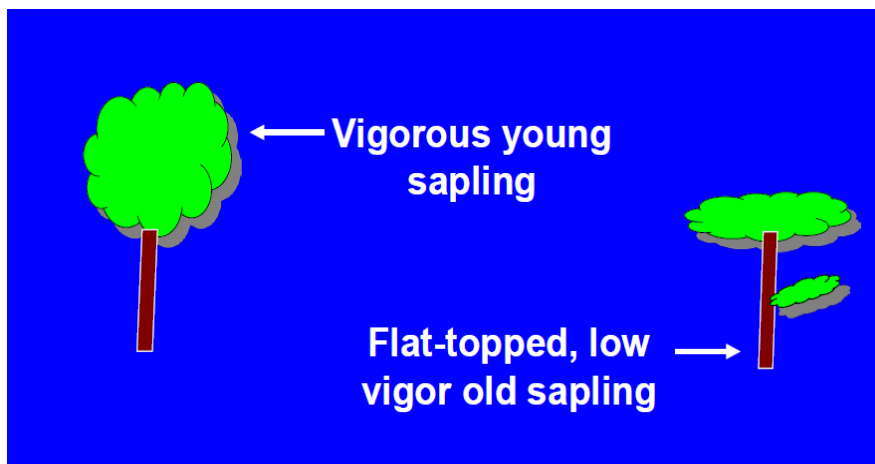


Assessing the level of degradation

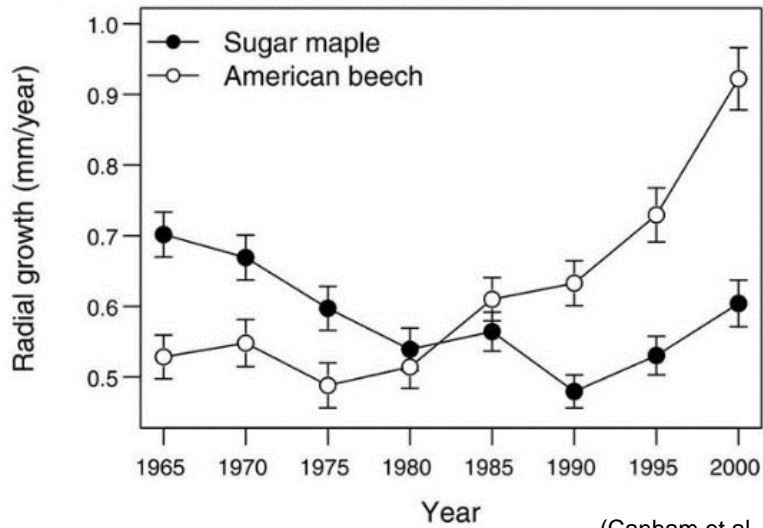
- Overstory/midstory
 - Range of tree ages



How to tell young, small trees from old, small trees



Do smaller, old trees respond to release?



PennState Extension

Assessing the level of degradation

- Overstory/midstory
 - Range of tree ages
 - Species composition
 - Acceptable vs unacceptable growing stock



PennState Extension

What is “acceptable growing stock”?

- Traditional “AGS”:
 - Tree of desirable species
 - Good form and free of defect (timber)
 - Healthy tree- no wounds on bole
 - No significant crown damage over 25%



What is “acceptable growing stock”?

- In a degraded woodlot?
 - Traditional AGS
 - Unacceptable, but a potential **seed source**



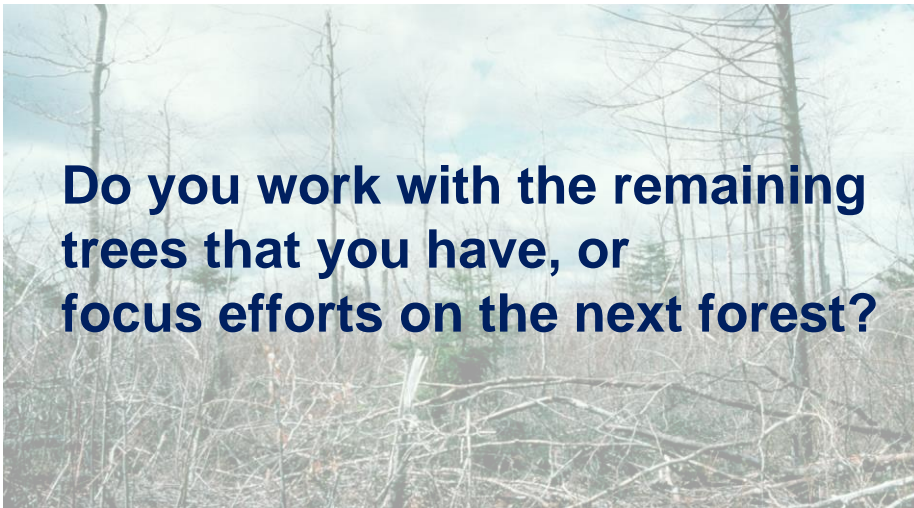
Assessing the level of degradation

- Understory
 - Advanced Regeneration
 - Species
 - Interfering vegetation
 - Degree of competition



Management options for degraded woodlands

Do you work with the remaining trees that you have, or focus efforts on the next forest?



Classifying levels of action required

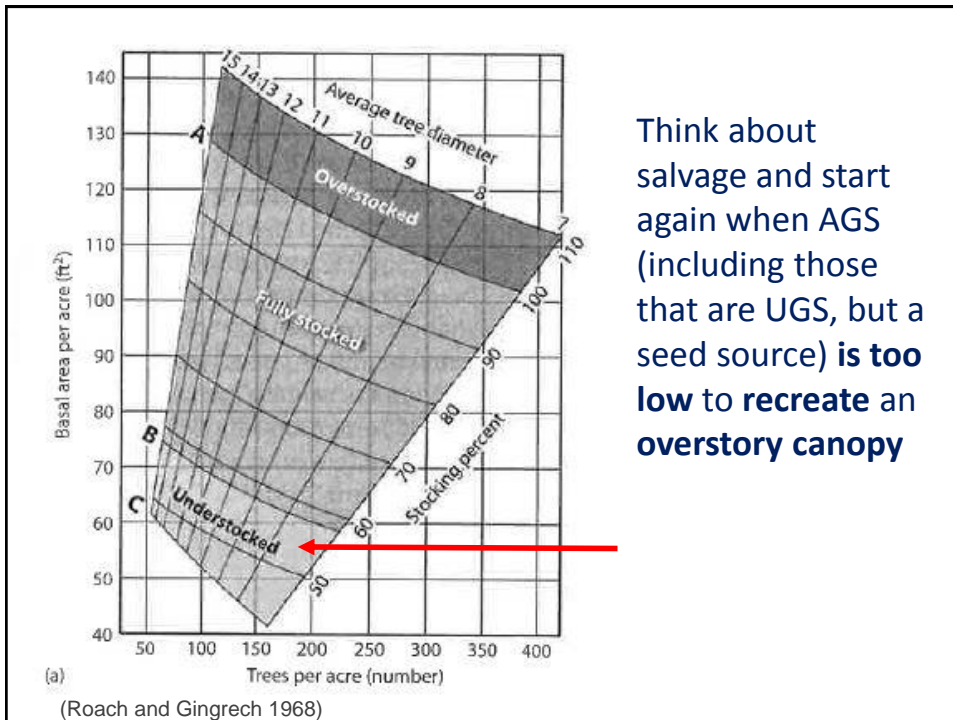
• SALVAGE

- The removal of dying or damaged trees to **recover value** that would otherwise be lost
- Implies more **dire conditions** and a **“start over”** approach such as with a ‘regeneration method’

Classifying levels of action required

• RESTORATION / REHABILITATION

- Actions to accelerate **recovery of forest structure, ecological functioning and biodiversity levels**
- Or restore capacity of forest to deliver **products and services**
- Work with what you have to **improve conditions**



Think about salvage and start again when AGS (including those that are UGS, but a seed source) is **too low** to recreate an overstory canopy

Clear cut and promote advance regeneration (if you have it)



If / when regeneration is present

PROTECT IT!



...and if you don't...



Clear cut and replant



With pre-planting veg. control !
And post-planting deer control!



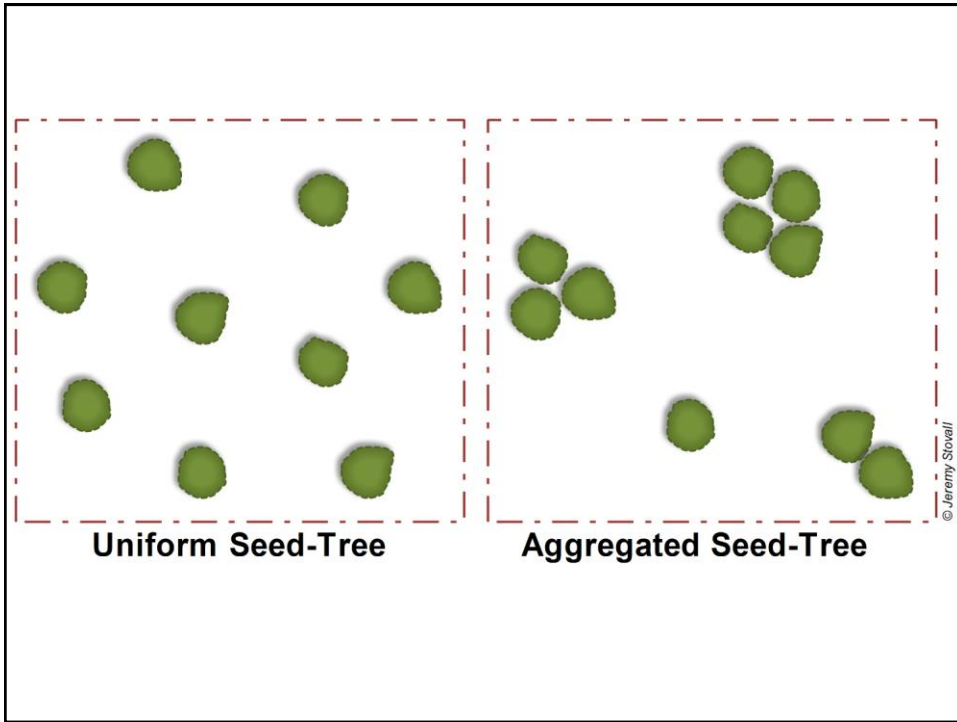
 PennState Extension

Seed Tree Method in degraded woodlands

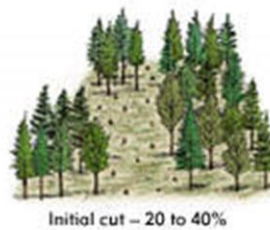
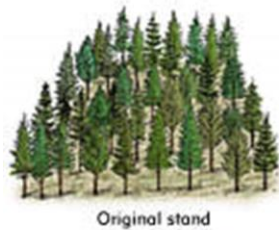
- Rely on the scattered mature trees that could be a good seed source



 PennState Extension



**“Irregular” shelterwood variants:
Expanding group shelterwood**



Start condition of degraded woodland



Extend group opening into shelterwood openings to promote new age classes



Management options for restoration

- Restoration Goals
 - Improve productivity of overstory/midstory (if there is enough to work with)
 - Improve woodlot quality
 - Remove poor vigor, unhealthy trees
 - Favor healthy trees of desirable species
 - Improve understory conditions to promote regeneration



Crop tree release

- Desirable species
- Between 6-12" dbh
- In better health/form
- Release at least 1-2 sides of tree
- In dense patches, remove all competitors within 8-12 ft of crop tree



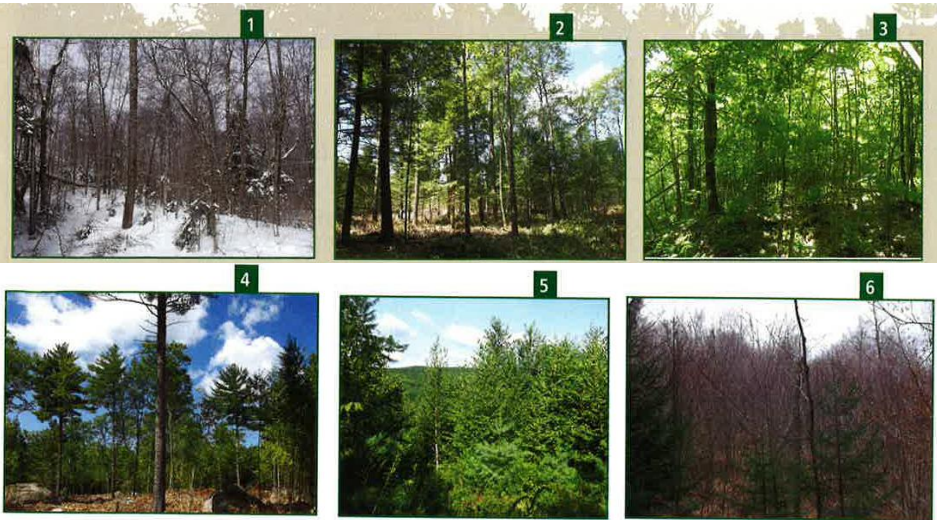
High intensity restoration



- Crop tree release
- Thin dense mid-story

- and underplanting if open patches exist

Micro-stand (or “micro-type”) management



(Holleran, R. 2016. Rehabilitation Silviculture. Sawmills & Woodlots Oct/Nov 2016: 28-31)

Evaluate microtypes for combinations of:

- Overstory canopy
 - Amount of canopy closure (full, partial, none)
 - Quality of canopy trees (AGS or UGS... or SUGS)
 - Age of overstory (mature or immature)
- Understory condition
 - Advanced regeneration? (Y/N)
 - Undesirable vegetation? (Y/N)

Then in each microtype decide on treatment:

- Regeneration method where:
 - Advanced regeneration is present and
 - full or partial canopy of mostly UGS (clearcut)
 - No regeneration but sufficient SUGS (shelterwood)
- Crop tree release or TSI where:
 - No regeneration and full canopy with limited acceptable growing stock...that can respond to release or be a future seed tree
- Understory vegetation management only
 - Partial understory with interfering vegetation

Consequences of this approach:

- Results in a multi-aged forest with complex age and structural diversity



Benefit of this approach

- Recovery of forest is faster than just a crop-tree approach, but is less drastic than a complete salvage operation
- Maintain some overstory canopy cover across the stand at all times
 - “Continuous canopy forestry”

How to simplify the process



How to simplify the process

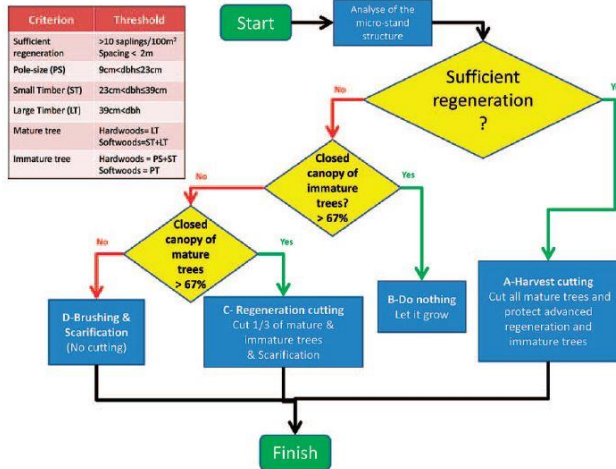


Figure 1. Decision-tree for multiple treatment irregular shelterwood systems.

Lussier and Meek. 2014. Managing heterogenous stands using a multiple treatment irregular shelterwood method. J. of For. 112: 287-295



ROACH-BAUER FORESTRY FORUM

A series of lectures with discussion on current forestry topics for foresters and related professionals in Northwestern Pennsylvania and Southwestern New York

PROGRAM

"Using a Multiple Treatment Approach for Rehabilitation Silviculture"

Dr. Jean-Martin Lussier

Research Scientist in Silviculture and Forest Management, Canadian Wood Fibre Centre, Canadian Forest Service

Dr. Lussier's career has spanned 25 plus years. He is currently employed by the Canadian Wood Fibre Centre within the Canadian Forest Service. The Wood Fibre Centre is dedicated to the enhancement of the competitiveness of the Canadian forest sector and is directly supported by Forest Program Innovations, one of the world's largest private, non-profit research centers. Dr. Lussier's research focuses on the development of silviculture systems adapted to hardwood, mixedwood and softwood stands, on the growth response of stands to partial cuttings, and on the optimization of forest management decisions.

DATE: Thursday, April 5, 2018 **REGISTRATION:** 5:30 – 6:30 PM (Cash Bar) **DINNER:** 6:30 PM
PLACE: Kane Country Club, Kane, PA. Route 6 between Lantz Corners & Kane, opposite Kane Drive-In Theatre

For reservations, contact the Allegheny Hardwood Utilization Group in Kane at 837-8550, by fax at 837-4950 or by email at hardwood@penn.com.



What should we do here?



Thank you!

