



American
Forest
Foundation

**Family Forest Carbon Program
New Opportunities for Forest Landowners**



AFF is a non-profit, mission-driven organization focused on partnering with private landowners to unlock the power of America's forests to fight climate change.



American
Forest
Foundation

The Nature Conservancy



Protecting nature. Preserving life.



American Forest Foundation

History of Partnerships

Integrity of Corporate Partners

Quality of Carbon Credits

Family Forest Carbon Program

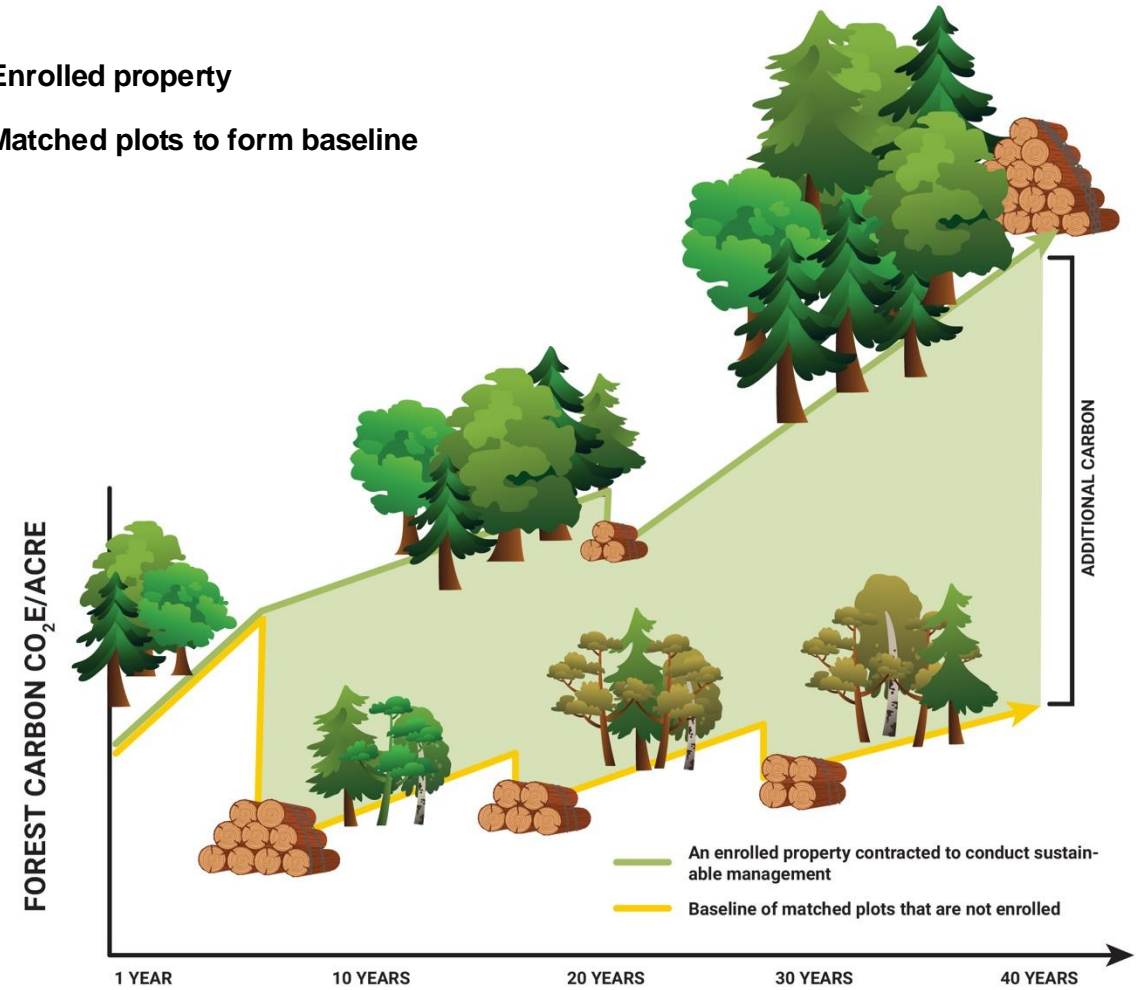
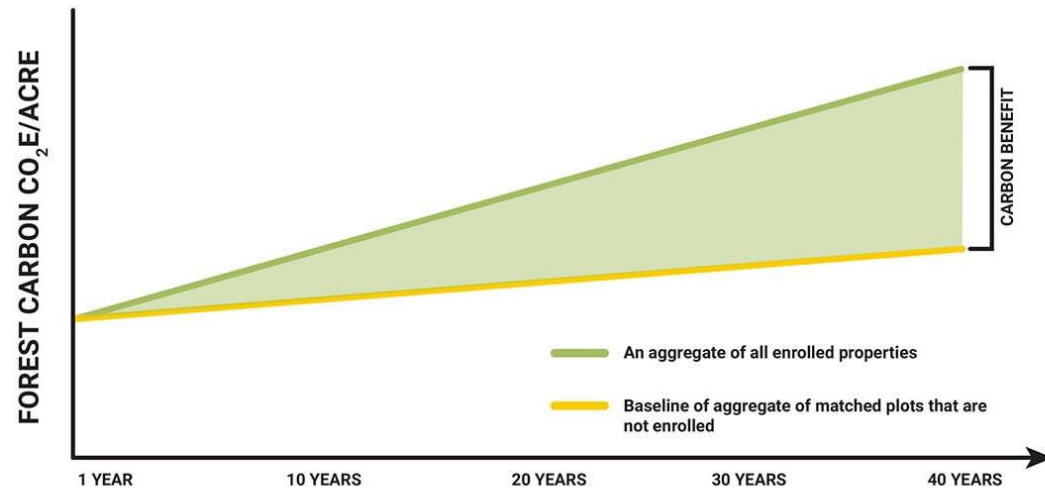


American
Forest
Foundation

A first-of-its-kind, innovative carbon accounting methodology



- Enrolled property
- Matched plots to form baseline



Permanence Strategy



Develop a robust and engaged **landowner community**.



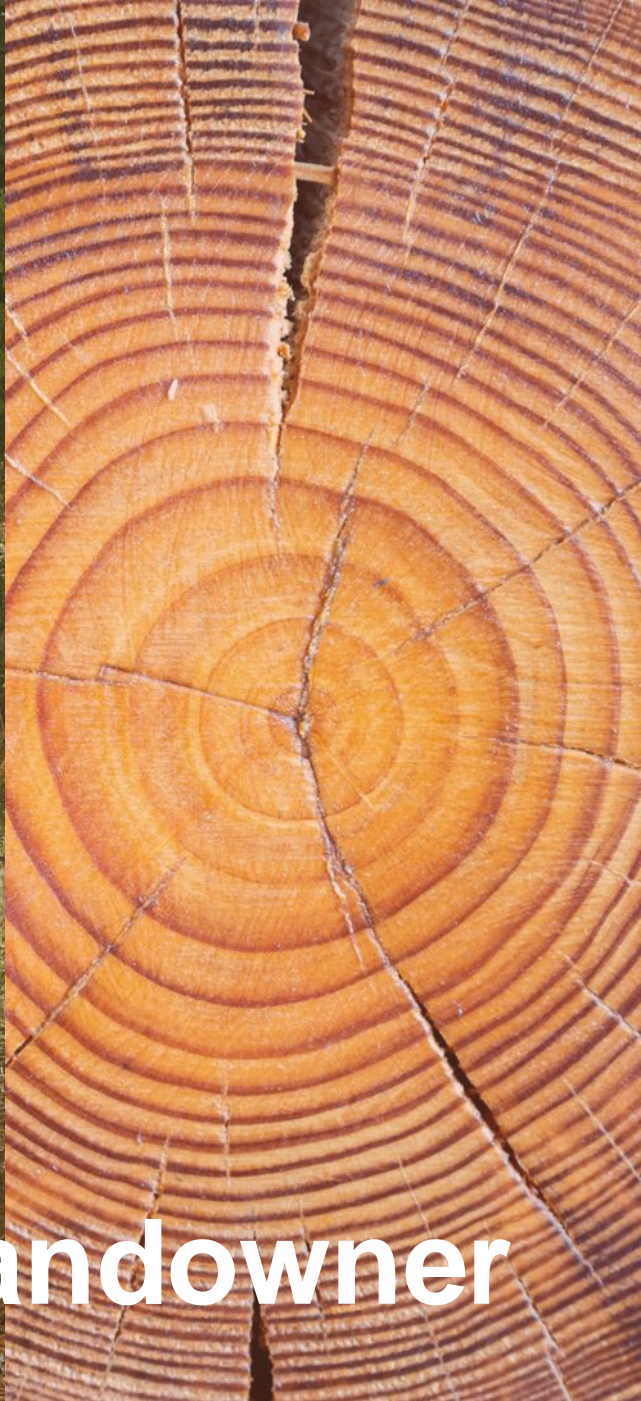
Remotely monitor all enrolled properties for compliance and post-contract change detection.



Compensate for reversals or carbon losses & put \$\$ in permanence fund

— Practices tailored for each region

- Forest Type Groups
- Harvest/management trends
- Carbon/Climate benefit
- Improved Forest Management
 - Extended rotations
 - Thinning
 - Minimizing soil disturbance
 - Controlling invasives
- Afforestation & Reforestation
- Exploring Avoided Emissions



Focusing on the priorities of a landowner

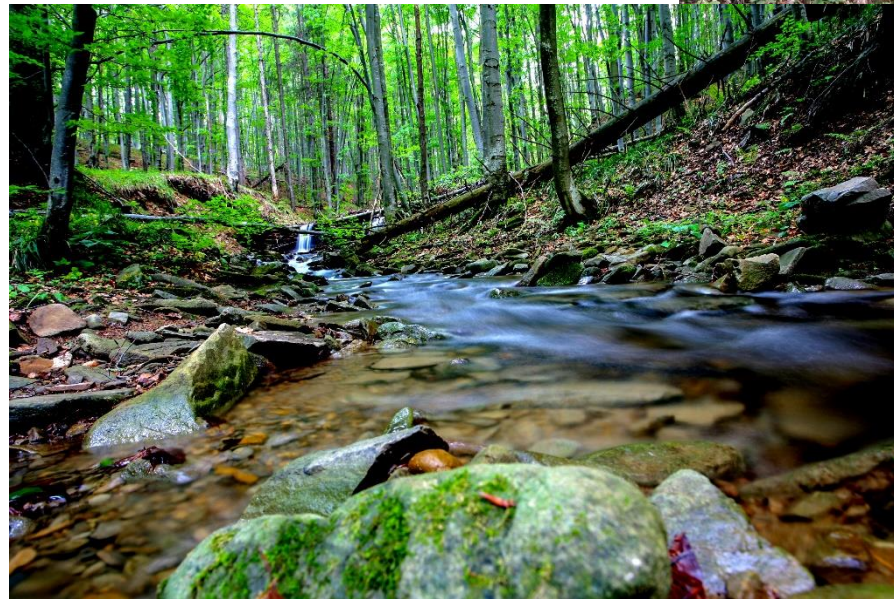


- 20-year Term
- 30 acre min
- \$150-300 per Acre - Paid for Practice
- Premium Offer – CSC 20% +

Guaranteed Income

Impact to Date

- 100 K acres enrolled
- 750 Landowners
- \$25 million committed
- Approx. 0.034% of the total Family Owned Forest Land in the USA (290M ac)
- Sent outreach to over 18,000 qualified landowners who expressed interest, with over 2.8M forested acres
- Met with 2,922 landowners owning over 485,000 forested acres



Climate Impact







- **1.93 M estimated VCUs (Verified Carbon Units)**
- **That's the equivalent of removing over 450,000 gas-powered vehicles from the road for one year!**
- **20 K credits pre-issuance**
- **Next issuance cycle Q2 2025**



AFF is launching a new way to buy carbon credits: the AFF Carbon Auction in Feb 2025



The first of its kind for a U.S. nature-based carbon project — offers buyers a transparent and streamlined way to secure high-quality credits while supporting rural communities and family forest owners.

-  One central place to access due diligence information
-  Greater transparency into pricing
-  A streamlined approach to secure high-quality carbon credits
-  A higher-integrity pathway to make a truly transformative investment



A photograph of two people in a forest. One person, wearing a dark hoodie and a backpack, is pointing towards the left. The other person, wearing a purple vest and a cap, is looking in the same direction. The forest has many tall, thin trees and some green ferns in the foreground. The ground is covered with fallen leaves and twigs.

Trained foresters will help LOs
create comprehensive plan
tailored to their objectives

Forest Management Plan

Forest Management Plans


- 2 Options
 - Free FFCP Template Plan
 - Qualitative Third Party, NRCS-ready plan – stipend
-
- As of end of Q1 2025 – 502 FMPs complete
 - 61% prescribed harvest
 - 77% are commercial



— Become an FFCP Consulting Forester

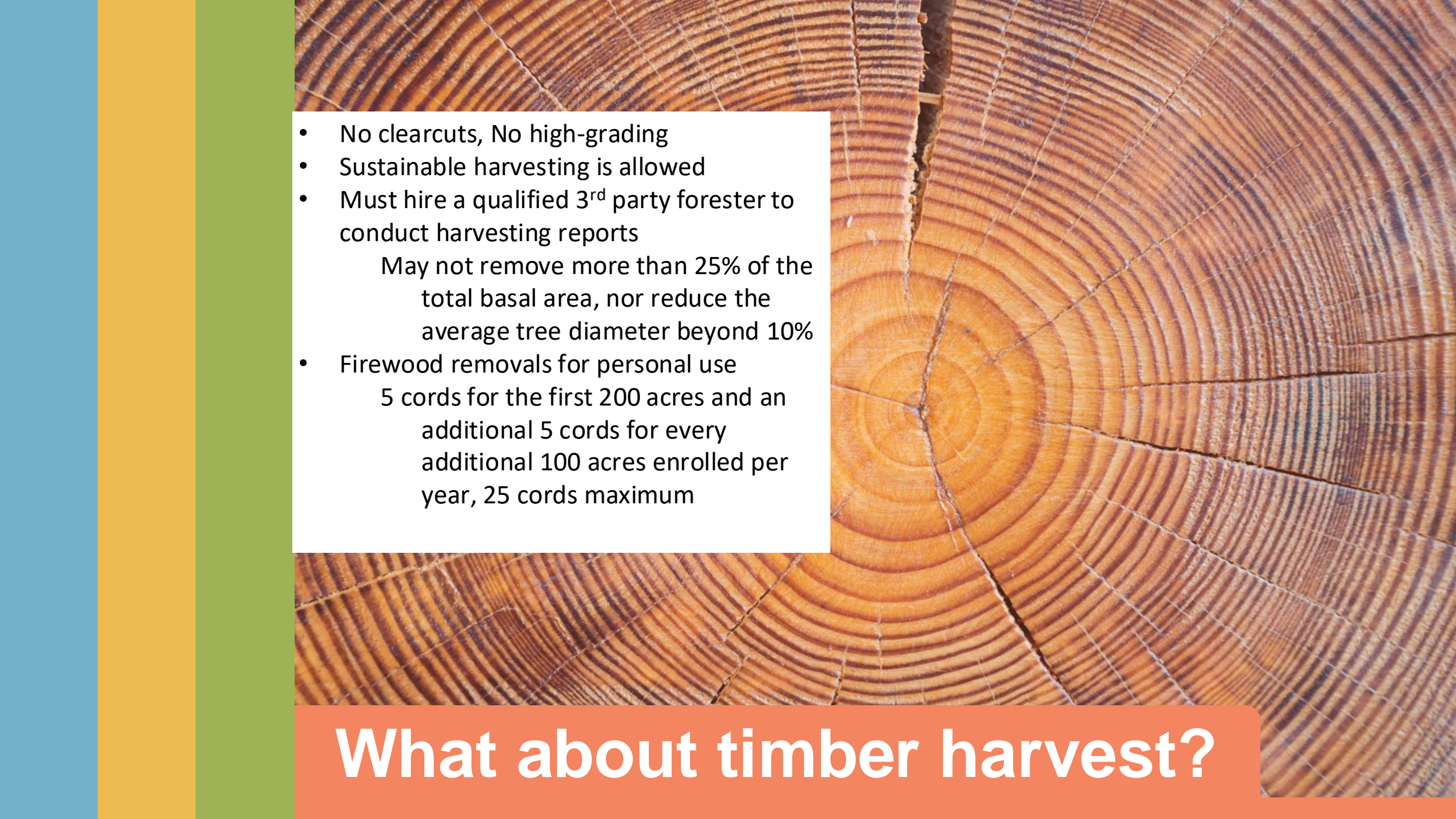
- **Grow their business, improve forest health, help address climate change and support your local community. We are always looking for consulting foresters**
- **Once becoming an FFCP-approved consulting forester, your eligible clients can enroll, you can connect with new clients, and we will fund both your work with the program and the landowner's implementation of the practices.**
- **\$263 K to consulting foresters in 2024**
- **\$329K to consultants in 2023**
- **Visit familyforestcarbon.org to learn more and get started!**



A woman with short grey hair, wearing a bright orange quilted jacket and dark pants, stands in a wooded area. She is holding a long wooden stake vertically in the ground. The forest is filled with tall grasses, shrubs, and several large trees with thick trunks. The scene is brightly lit, suggesting a sunny day. The image is framed by a blue vertical bar on the left and an orange vertical bar on the right.

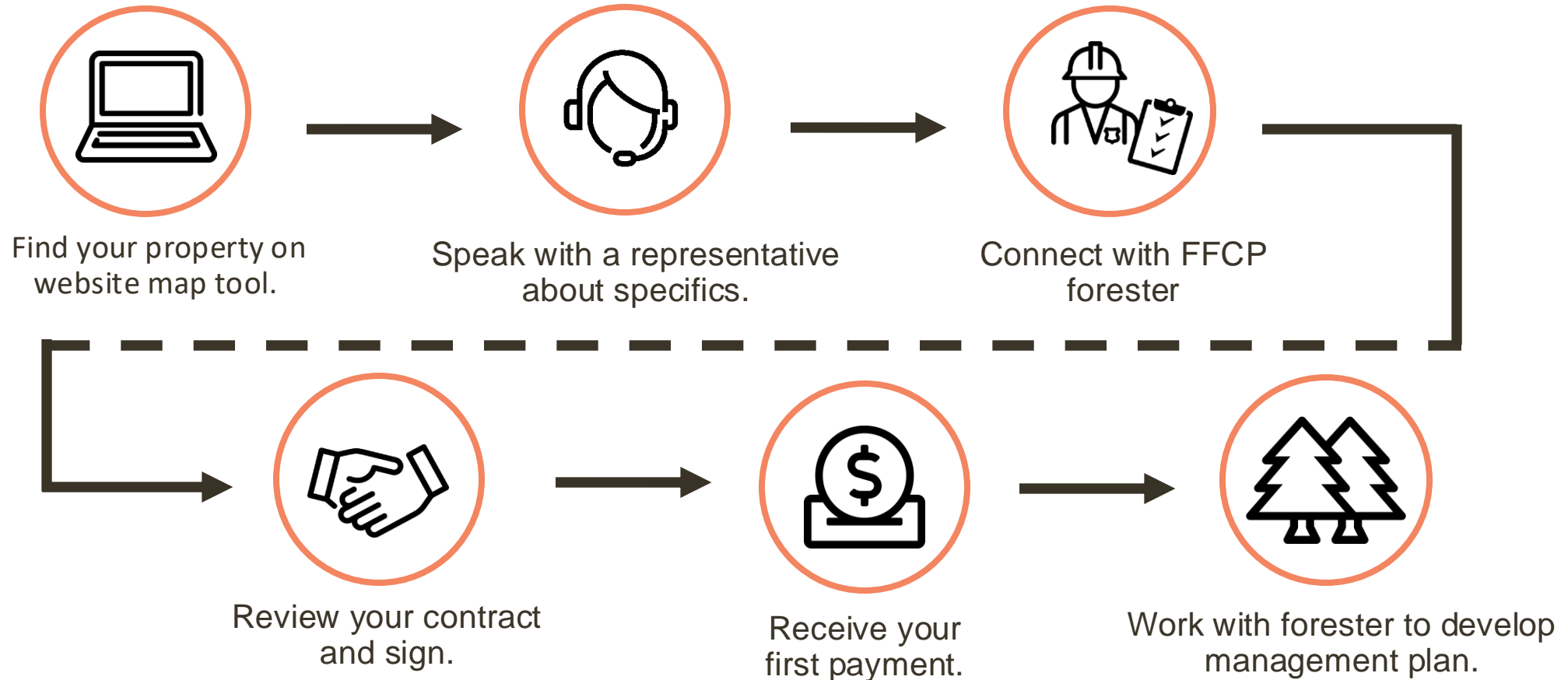
You are part of a
community of like-minded
landowners with access to
vital resources

Long-term Support

- 
- No clearcuts, No high-grading
 - Sustainable harvesting is allowed
 - Must hire a qualified 3rd party forester to conduct harvesting reports
 - May not remove more than 25% of the total basal area, nor reduce the average tree diameter beyond 10%
 - Firewood removals for personal use
 - 5 cords for the first 200 acres and an additional 5 cords for every additional 100 acres enrolled per year, 25 cords maximum

What about timber harvest?

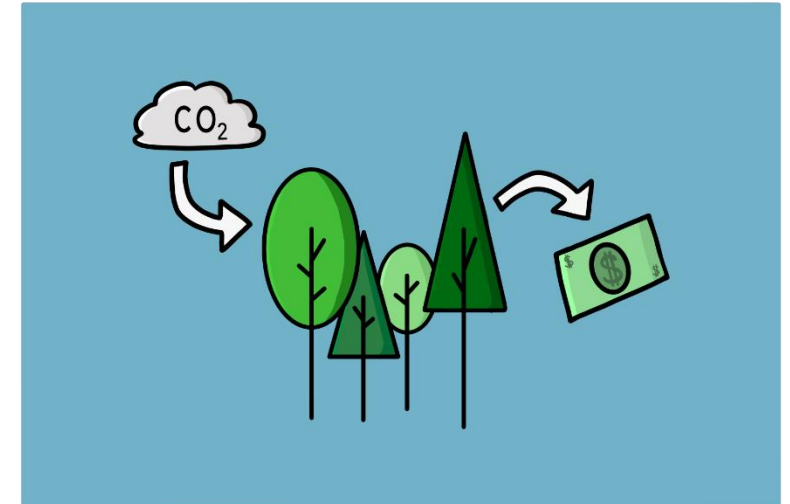
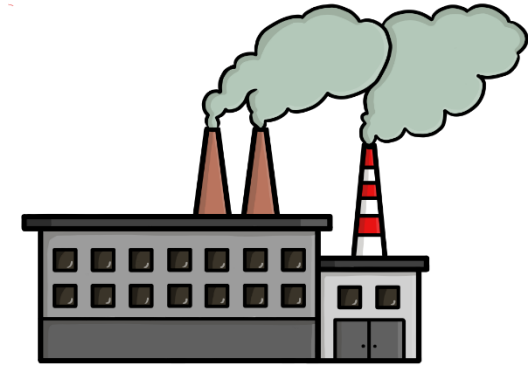
How Landowners Enroll



Get started at www.familyforestcarbon.org

— Scope 3 Opportunities

- In response to developments in voluntary corporate climate frameworks, AFF has explored the potential to use the carbon accounting frameworks utilized by FFCP to enable companies that use wood products to improve the climate impact of their operations (Scope 3 emissions)
- Collaborating w/ Verra and secured the support of USDA through CSC program to pilot accounting approach that unlocks corporate investments in the forest products value chain.
- Pilot from October 2024 through December 2025
- Seeking to engage a consultant able and willing to devote a substantial (>50%) portion of their time to assisting with the implementation of the Scope 3 pilot. Submission deadline Friday, Oct. 18!
- Submit proposals to ntruit@forestfoundation.org by 5 EST on Friday, October 18th .



Questions?

Sarah Hall

Director of Forestry

shall@forestfoundation.org

Familyforestcarbon.org