

Appendix B

Description of Sampling Frame, Sample Plots, and Database Format

For the Project

**Developing and Testing a Rapid Assessment Protocol for Monitoring Vegetation
Response to Deer Population Reduction in DMAP Areas on State Forest Lands**

Prepared by

Richard S. Fritsky
Pennsylvania Cooperative Fish and Wildlife Research Unit

Duane R. Diefenbach
U.S. Geological Survey
Pennsylvania Cooperative Fish and Wildlife Research Unit

January 8, 2007

Table of Contents

Methods..... 62

 Selecting Areas to Survey..... 62

Database Specifications 63

Maps..... 68

 DMAP Areas surveyed in Pennsylvania..... 68

 Bald Eagle State Forest (DMAP #55)..... 69

 Delaware State Forest (DMAP #266)..... 70

 Elk State Forest (DMAP #54)..... 71

 Gallitzin State Forest (DMAP #931) 72

 Loyalsock State Forest (DMAP #370)..... 73

 Michaux State Forest (DMAP #543) 74

 Moshannon State Forest (DMAP #18) 75

 Sproul State Forest (DMAP #704)..... 76

 Susquehannock (DMAP #29) 77

 Tioga State Forest (DMAP #44) 78

 Tuscarora State Forest (DMAP #99) 79

Plot Coordinates..... 80

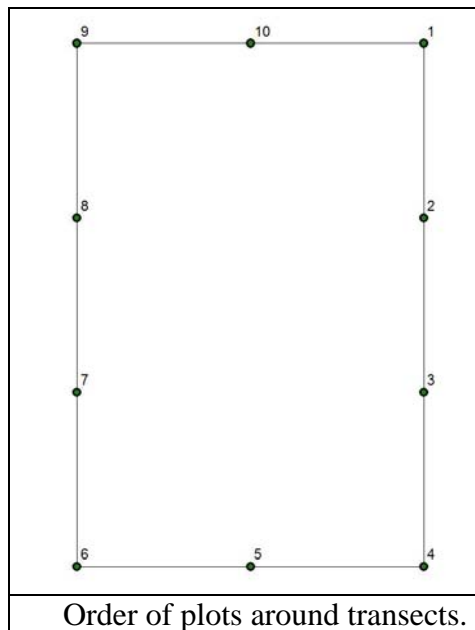
Methods

Selecting Areas to Survey

Eleven DMAP areas (page 9) were chosen to be surveyed based on recommendations by J. M. Benner of DCNR. Using ArcGIS, we generated a grid of cells 980 m × 1470 m to represent primary sampling units or blocks. This was inserted as a layer in GIS along with a layer of the 11 chosen DMAP areas thereby creating 817 possible blocks. Of these, we selected 558 blocks having >30% of area on DMAP and <30% area on private property. From these 558 usable blocks, 300 were randomly selected to be surveyed and 236 were actually surveyed.

Thirty blocks were selected to be revisited at the end of the summer to be used for measuring variation due to seasonal changes in vegetation. Ten blocks were selected from Tioga in the northern part of the state, 10 were selected from Sproul in the center region, and 10 were selected from Tuscarora and Gallitzin State Forests in the south.

Plots were numbered clockwise with Plot #1 at the northeast corner as depicted in the following diagram.



Database Specifications

DMAPbloc: For each block, this table specifies the corresponding DMAP area's number and forest name. Attributes:

- Col_Row (OBSOLETE)** – This is the original unique identifier for each block as assigned by the Fishnet extension in ArcGIS. DataType: Text
- DMAPno** – Specifies the DMAP number of the area which the block falls inside or is adjacent to. DataType: Integer.
- Block** – This is the Block Number for each sampling block. DataType: String
- Team** – Designates which team(s) completed the data collection for a particular block. Multiple digits indicate that data collection was done by multiple teams. (e.g. a value of “134” indicates that data collection was done by teams 1, 3, and 4). Datatype: Integer
- PlotsDone** – Specifies the number of plots completed for each block. DataType: Integer.
- Forest** – Specifies the name of the State Forest. DataType: String.

Barbells: This table represents each group of subplots within a block, and there are 10 of these in each block. Attributes:

- SPID** - Primary Key, this is the unique identifier for each Barbell Plot
- PPID** - Foreign Key, this attribute provides a link to the Block in which the Barbell is contained. Data Type: GUID
- PlotNum** - Plot Number for each barbell. Range – 1 thru 10 Datatype: Integer
- XCoordinate** - Unused
- YCoordinate** - Unused
- ProjectionCode** - Unused
- DateStamp** - Date Stamp whenever the barbell plot was completed.
- BAF** - Unused
- Status** - Designates whether the plot is still in progress or complete. Automatically set to true when all plots (Overstory, 2 Regen, and Rectangle) are completed. DataType: Boolean, False = incomplete, True = complete

Blocks: This table represents each sampling block, in which 10 barbells are contained. Attributes:

- BID** - Primary Key, identifies each Block. DataType: GUID
- PlotNum** – (OBSOLETE) This is the original unique Plot Number for each sampling block. This number contained multiple values, so for simplicity it has been replaced with Block, Team, and Revisited. The last 2 characters, an underscore and a digit, identify the team which surveyed the block. (e.g. 100_2 indicates that block 100 was surveyed by team 2) Values containing “R”, “r”, or “-1” indicates that data was collected during a revisit of the block. DataType: String
- Block** – This is the Block Number for each sampling block. DataType: String
- Team** – Designates which team(s) completed the data collection for a particular block. Multiple digits indicate that data collection was done by multiple teams.

(e.g. a value of “134” indicates that data collection was done by teams 1, 3, and 4). Datatype: Integer

Revisited – Specifies whether data for this block was collected during a revisit. Datatype: Boolean, False = first visit, True = revisit.

DateStamp - Indicates the time at which the Block was completed.

Crew - Unused

XCoordinate- Unused

YCoordinate - Unused

ProjectionCode -Unused

Status - Designates whether the plot is still in progress or complete. Automatically set to true when all 10 Barbells are completed. Datatype: Boolean, False = incomplete, True = complete

OverstoryPlots: This table contains records for each overstory plot. There is one of these plots per barbell.

Attributes:

OPID - Primary Key, identifies each Overstory Plot

SPID - Foreign Key, provides link to the Barbell Plot which the Overstory Plot is contained by.

Status - Indicates whether plot is still in progress or complete. Datatype: Boolean, False = incomplete, True = complete

RectanglePlots: This table contains records for each rectangle plot. There is also one of these plots per barbell.

Attributes:

RectID - Primary Key, uniquely identifies each rectangle plot.

SPID - Foreign Key, provides link to Barbell Plot in which the plot is contained.

Status - Indicates whether plot is still in progress or complete. Datatype: Boolean, False = incomplete, True = complete

Spp - Unused

ViburnumPresent -Indicates presence of Viburnum. Datatype: Boolean, False = not present, True = present

GreenbriarPresent - Indicates presence of Green briar. Datatype: Boolean, False = not present, True = present

ElderberryPresent - Indicates presence of Elderberry. Datatype: Boolean, False = not present, True = present

RegenPlots: Each record in this table represents a single regen plot. Two regen plots are contained in each barbell. Attributes:

RPID - Primary Key

SPID - Foreign Key

FirePresence - Indicates presence of Fire. Datatype: Boolean, False = not present, True = present

LoggingPresence - Indicates presence of Logging. Datatype: Boolean, False = not present, True = present

ViburnumPresence - Indicates presence of Viburnum. DataType: Boolean, False = not present, True = present

PctFern - Indicates % Cover of fern in the plot. DataType: Number, values represent a percentage of 100 e.g. the number 15 represents 15 percent of the decimal number .15.

PctRubus - Indicates % Cover of Rubus in the plot. DataType: Same as above.

PctGrass - Indicates % Cover of Grass in the plot. DataType: Same as pctFern.

PctForbs - Indicates % Cover of Forbs in the plot. DataType: Same as pctFern.

TriliumCount - Count of Trillium in the plot.

ICCount - Count of Indian Cucumber

MaiaNFCCount - Count of Non-Flowering Canada Mayflower.

MaiaFCCount - Count of Flowering Canada Mayflower.

JackCount - Count of Jack in the Pulpit

TallestTrilium - Measure of the tallest trillium on the plot. Units: cm.

TallestIC - Measure of the tallest Indian cucumber on the plot. Units: cm.

TallestMaia - Measure of the tallest mayflower on the plot. Units: cm.

TallestJack - Measure of the tallest jack in the pulpit on the plot. Units: cm.

FirstPlot - Indicates if the plot was the first Regen plot of the barbell. True = first plot, false = second plot

Status - Indicates whether plot is still in progress or complete. DataType: Boolean, False = incomplete, True = complete

Moisture - Indicates Xeric, Mesic, or Hydric site. DataType: Text, Values: X, M, or H.

Comments - Contains comments for the plot. DataType: Memo.

Overstory: Contained in this table is each individual tree that was recorded on overstory plots. Each tree contains an OPID, which links it to a specific OverstoryPlot.

Attributes:

TRID - Primary Key, unique ID for each tree.

OPID - Foreign Key, links tree to the overstory plot in which it is contained.

Spp - Species of the Tree. DataType: Text, Values are species codes. Species text is retrieved from the TreeSpp table.

Diameter - Diameter of the tree. Units: inches. DataType: Number

Sapling/Shrub: Contained in this table are all recorded understory that was taken in the Rectangle plots.

Attributes:

SHRID - Primary Key

RectID - Foreign Key

Spp - Species of the Tree. DataType: Text, Values are species codes. Species text is retrieved from the TreeSpp and UnderstorySpp table.

HtClass - Unused.

Regen: Contained in this table is all the data collected on each regen plot.

Attributes:

PLAID - Primary Key

RPID - Foreign Key

Spp - Species codes. Species text is retrieved from the TreeSpp and UnderstorySpp table. DataType: Text

Ht - Unused.

Browsed - Indicates if the regen was browsed. True = Browsed. False = not browsed.

LessThan30 - Indicates if the regen was under 30cm. True = (< 30 cm). False = (> 30 cm).

UnderstorySpp: Contained in this table is the names of all understory species.

Attributes:

Sppcode - Species codes. DataType: Text

Spptext - Common name of species. DataType: Text

Class - Class of species. Datatype: Integer. Values: 1=palatable to deer, 2=not-palatable, and 3= interference.

Herbacious - Indicates if species is herbacious. DataType: Boolean, False = not herbacious, True = herbacious.

TreeSpp: Contained in this table is the names of all understory species.

Attributes:

Sppcode - Species codes. DataType: Text

Spptext - Common name of species. DataType: Text

Class - Class of species. Datatype: Integer. Values: 1=palatable to deer, 2=not-palatable, and 3= interference.

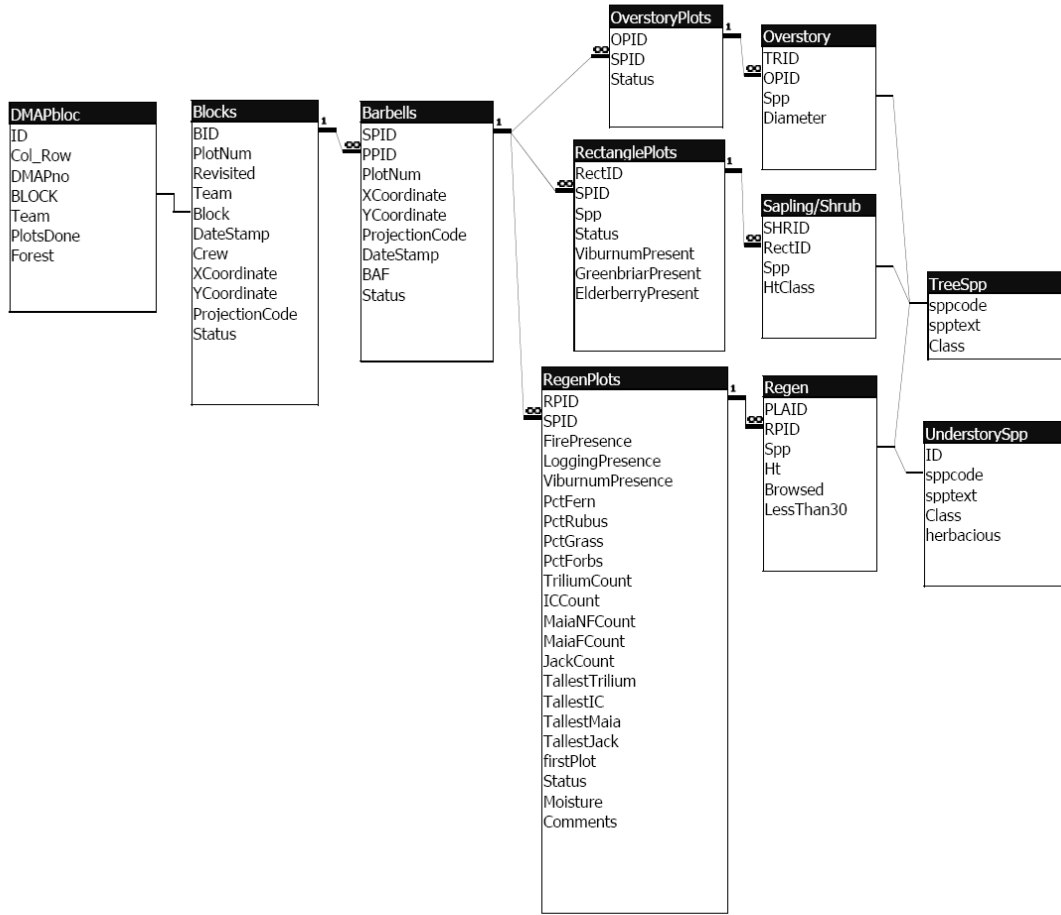
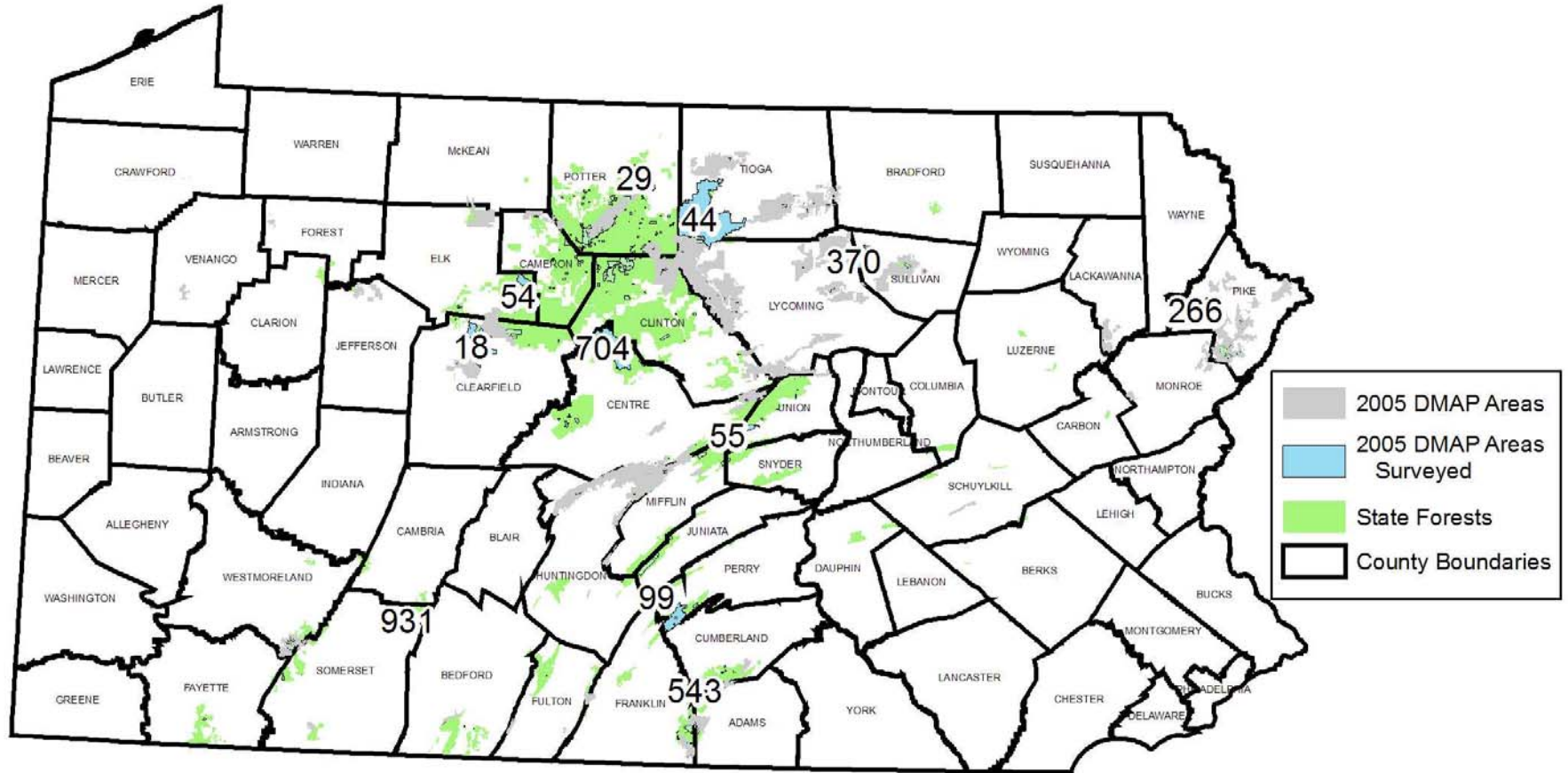


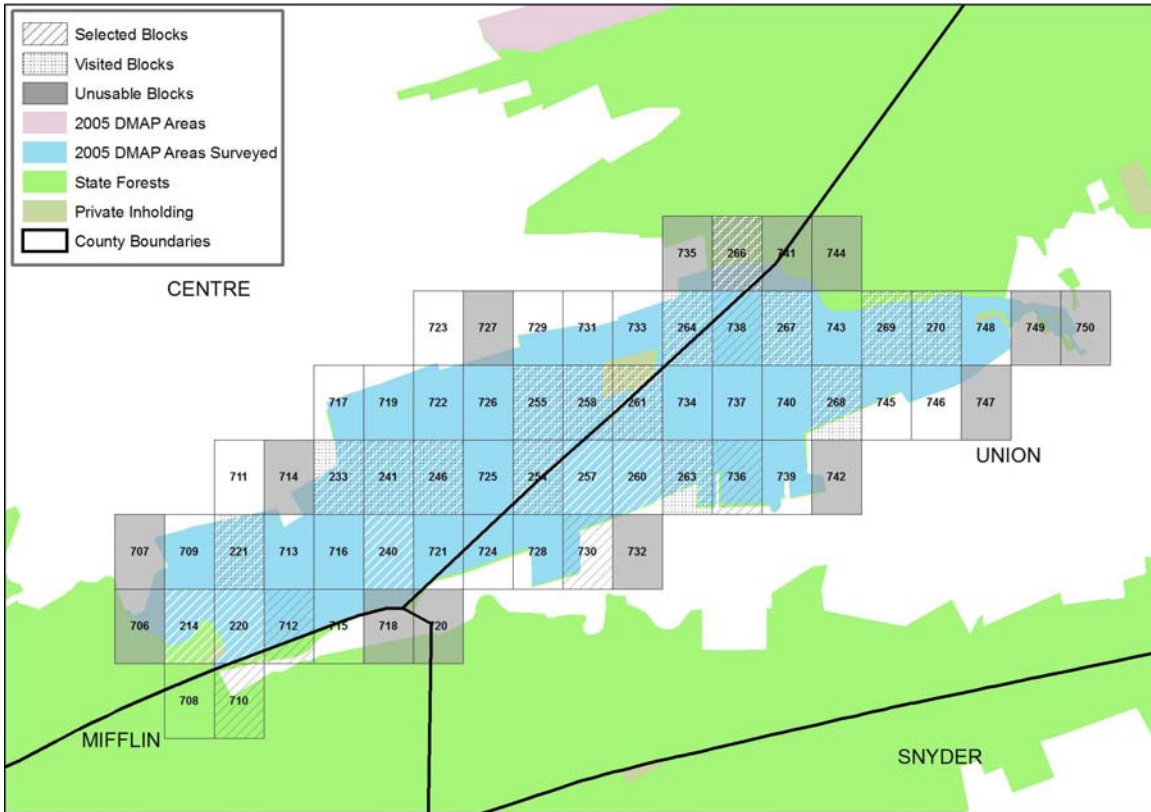
Figure 1. Relationships between all tables in the Microsoft Access database.

Maps

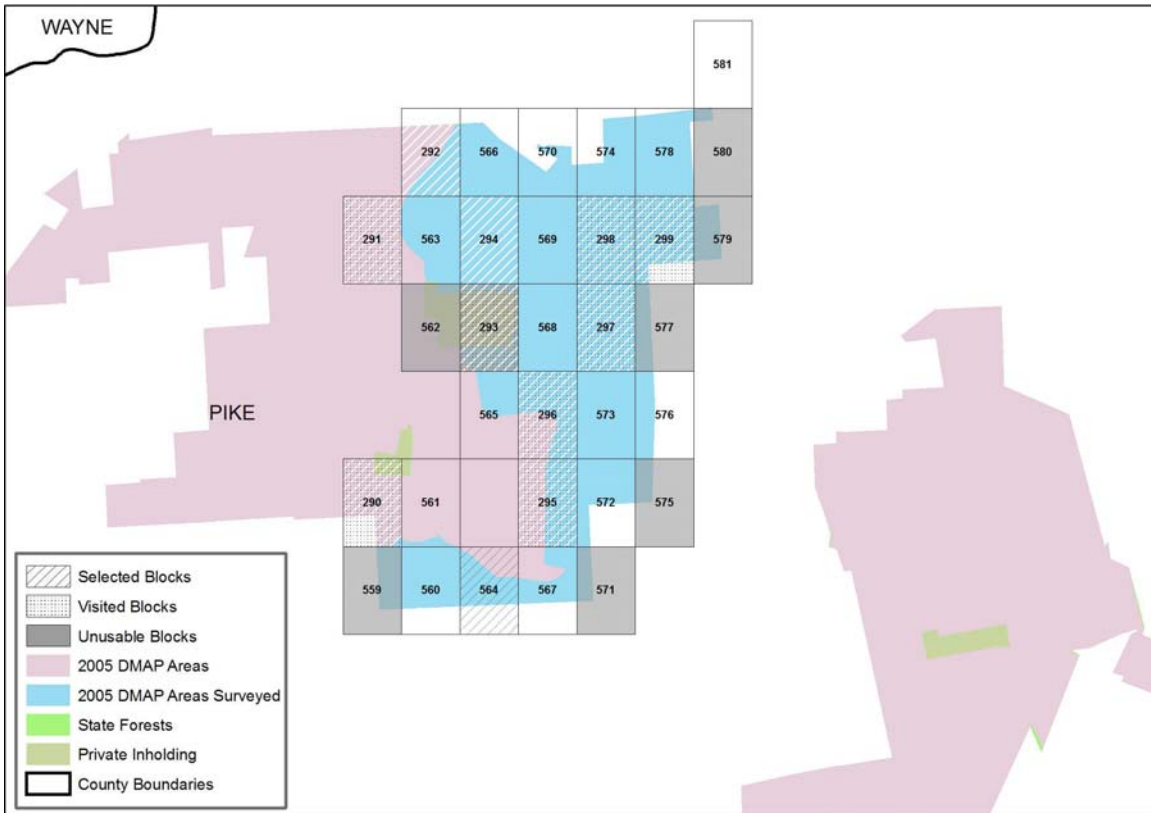
DMAP Areas surveyed in Pennsylvania



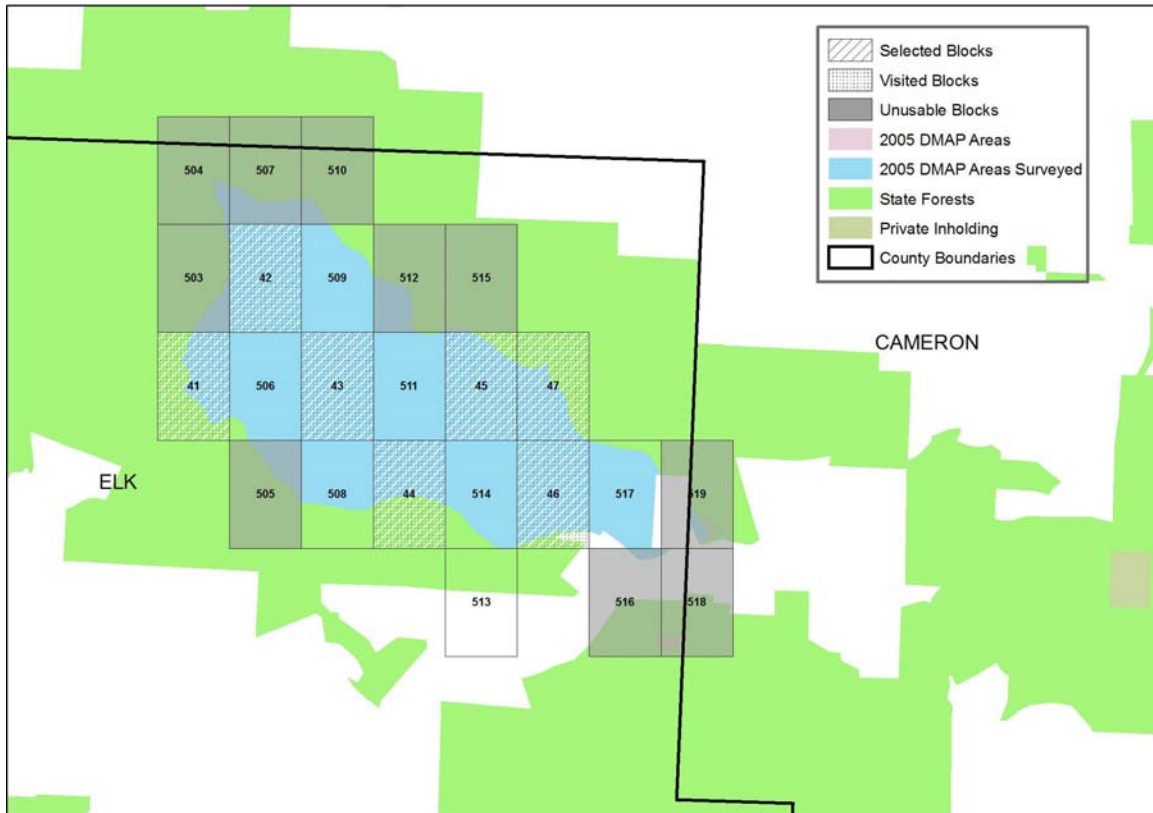
Bald Eagle State Forest (DMAP #55)



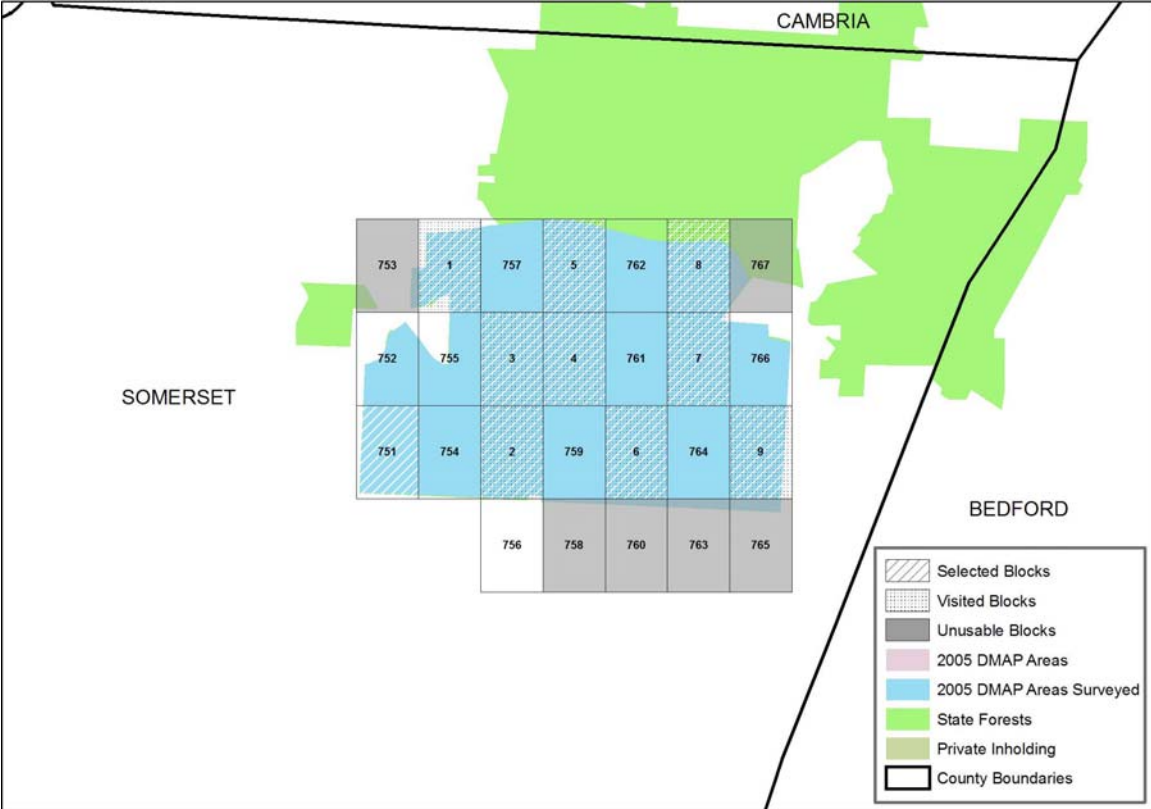
Delaware State Forest (DMAP #266)



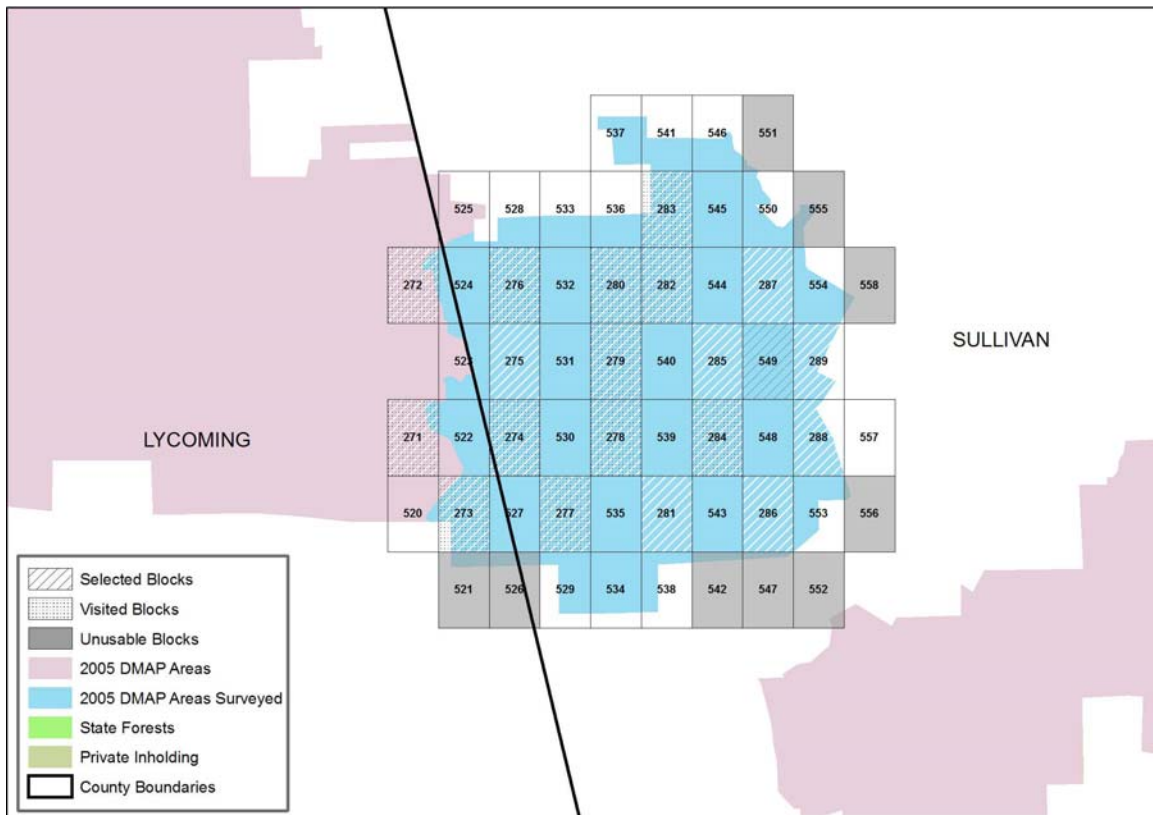
Elk State Forest (DMAP #54)



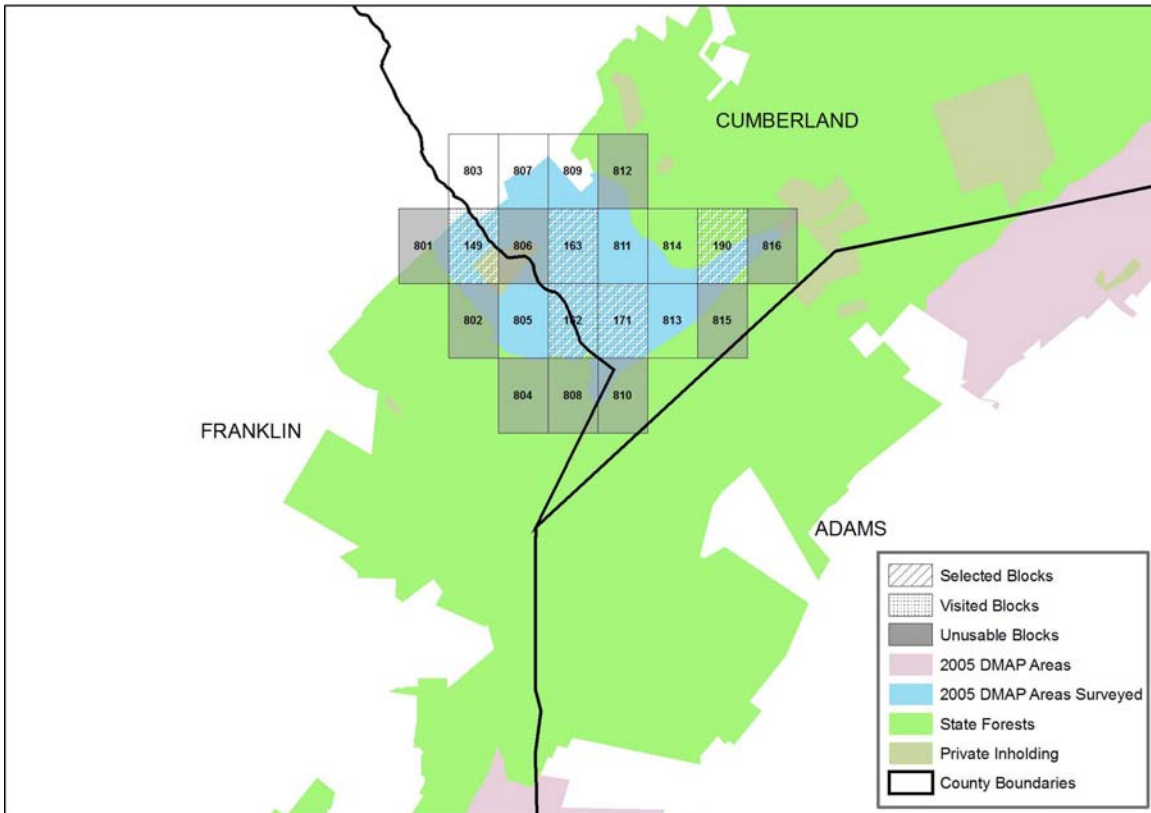
Gallitzin State Forest (DMAP #931)



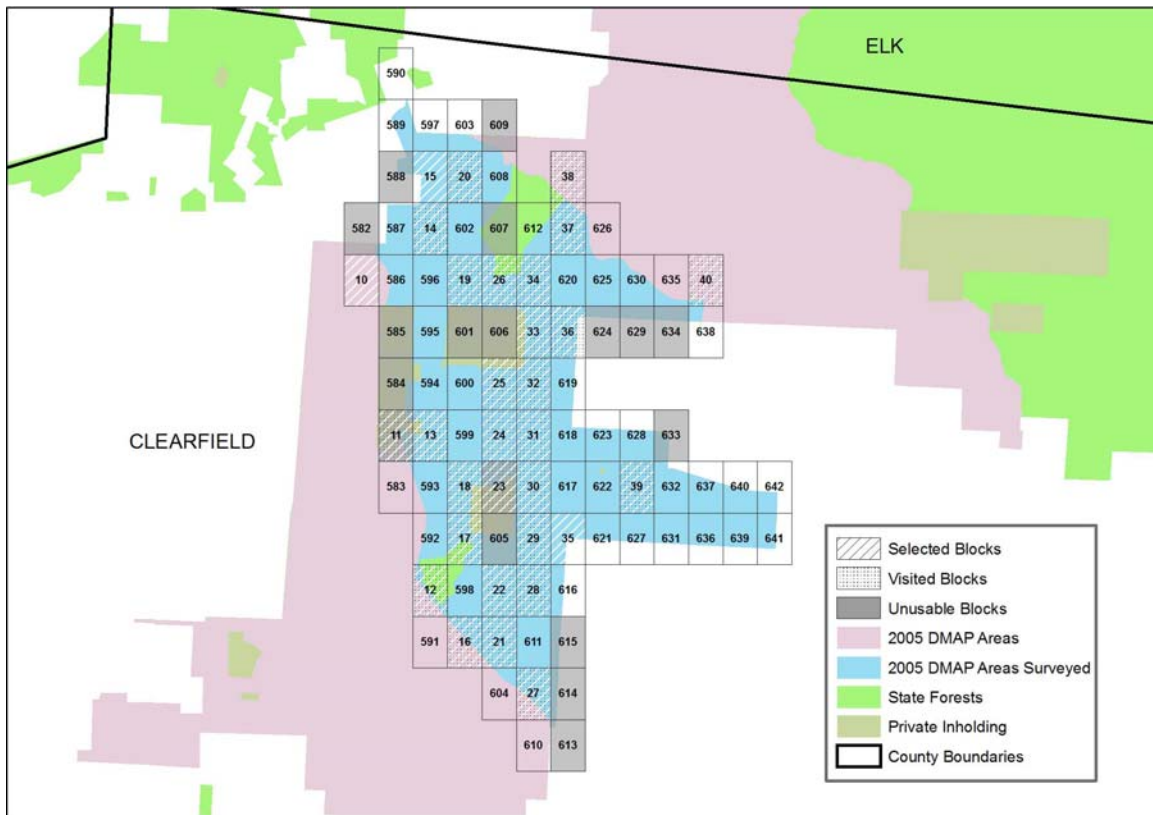
Loyalsock State Forest (DMAP #370)



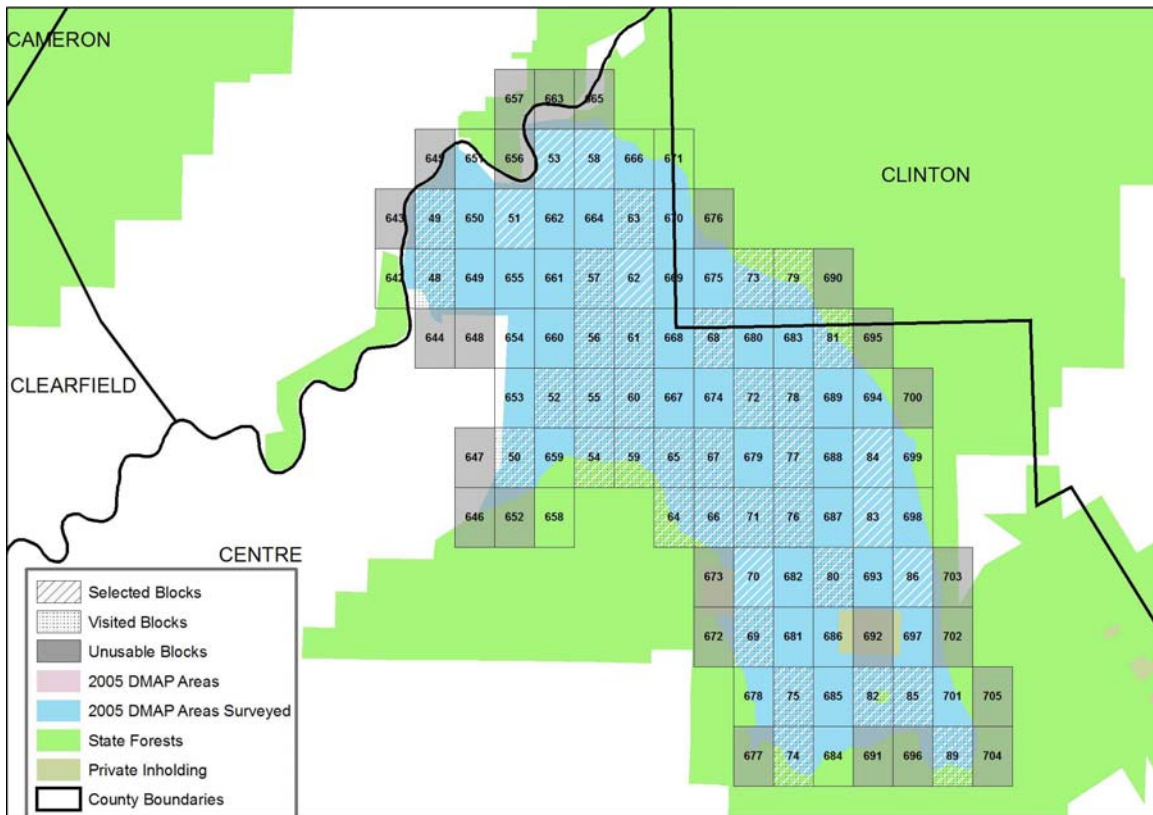
Michaux State Forest (DMAP #543)



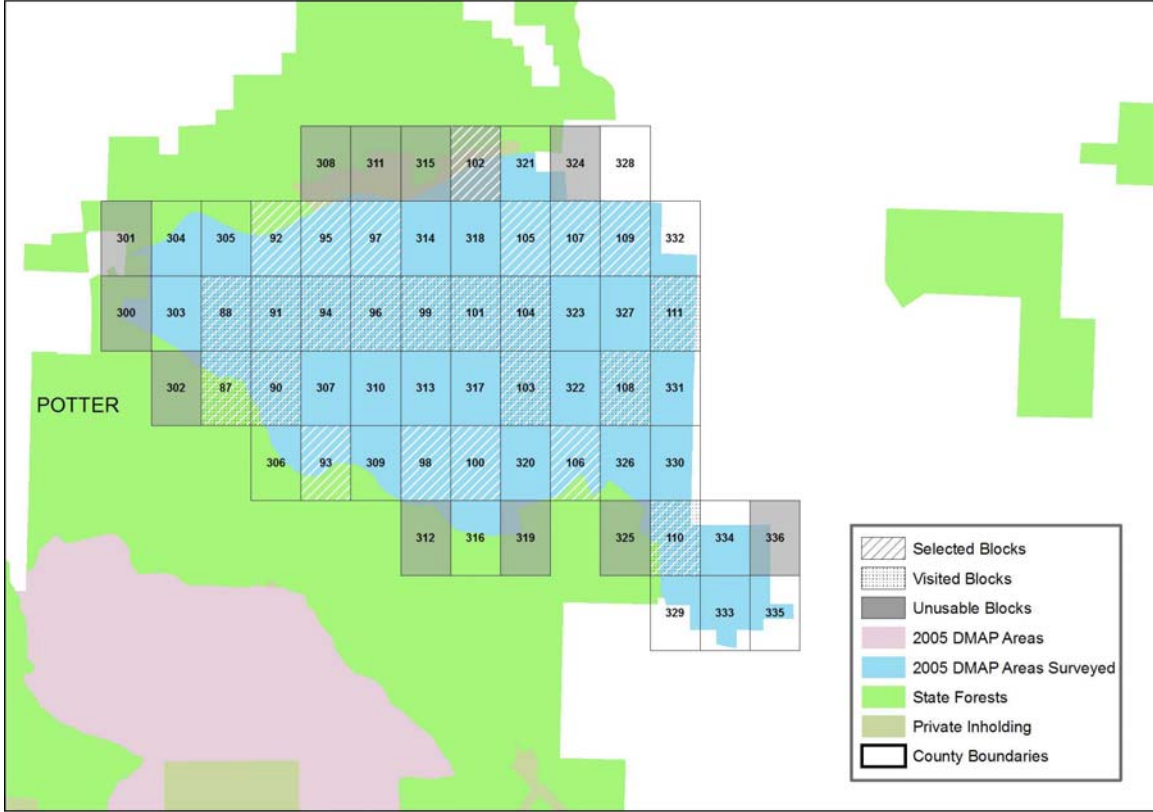
Moshannon State Forest (DMAP #18)



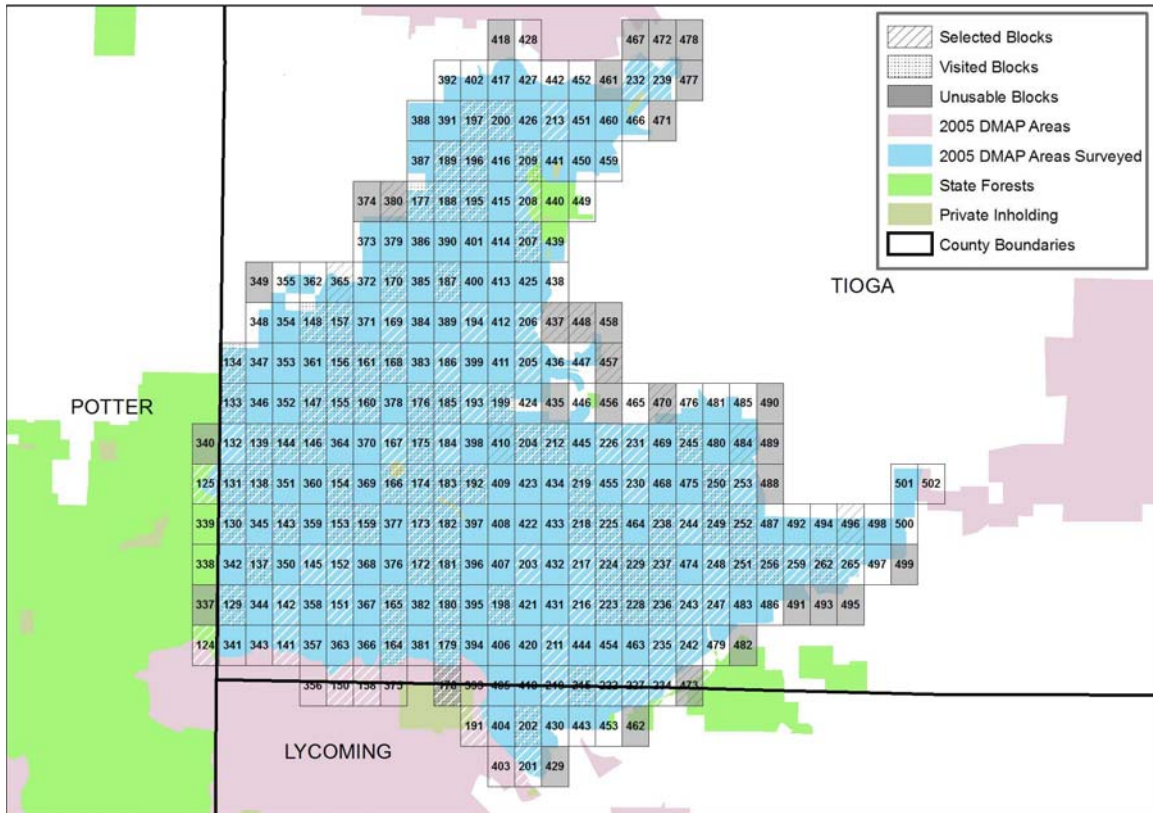
Sproul State Forest (DMAP #704)



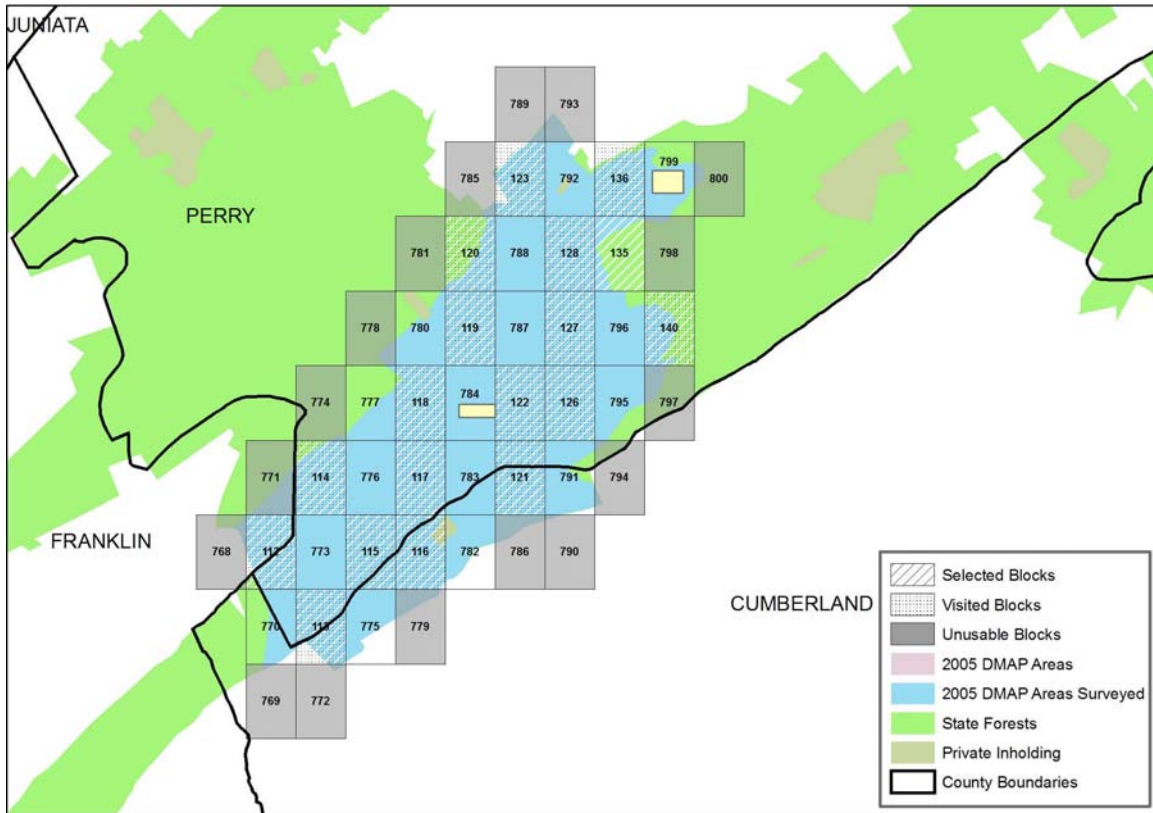
Susquehannock (DMAP #29)



Tioga State Forest (DMAP #44)



Tuscarora State Forest (DMAP #99)



Plot Coordinates

The following is a list of UTM coordinates (Datum NAD1983, Zone 17N and 18N) for plot #1 located in the northeast corner of each of the original 814 blocks. Blocks 1-300 were initially selected to be surveyed. *S - Surveyed

Block	DMAF	Forest	X	Y	Zone	S*	Block	DMAF	Forest	X	Y	Zone	S*
1	931	Gallitzin	178910	4457945	17	Y	52	704	Sproul	254370	4560845	18	Y
2	931	Gallitzin	179890	4455005	17	Y	53	704	Sproul	254370	4566725	18	
3	931	Gallitzin	179890	4456475	17	Y	54	704	Sproul	255350	4559375	18	Y
4	931	Gallitzin	180870	4456475	17	Y	55	704	Sproul	255350	4560845	18	Y
5	931	Gallitzin	180870	4457945	17	Y	56	704	Sproul	255350	4562315	18	Y
6	931	Gallitzin	181850	4455005	17	Y	57	704	Sproul	255350	4563785	18	Y
7	931	Gallitzin	182830	4456475	17	Y	58	704	Sproul	255350	4566725	18	
8	931	Gallitzin	182830	4457945	17	Y	59	704	Sproul	256330	4559375	18	Y
9	931	Gallitzin	183810	4455005	17	Y	60	704	Sproul	256330	4560845	18	Y
10	18	Moshannon	201450	4565255	17		61	704	Sproul	256330	4562315	18	Y
11	18	Moshannon	202430	4560845	17	Y	62	704	Sproul	256330	4563785	18	
12	18	Moshannon	203410	4556435	17	Y	63	704	Sproul	256330	4565255	18	Y
13	18	Moshannon	203410	4560845	17	Y	64	704	Sproul	257310	4557905	18	Y
14	18	Moshannon	203410	4566725	17	Y	65	704	Sproul	257310	4559375	18	Y
15	18	Moshannon	203410	4568195	17		66	704	Sproul	258290	4557905	18	Y
16	18	Moshannon	204390	4554965	17	Y	67	704	Sproul	258290	4559375	18	Y
17	18	Moshannon	204390	4557905	17	Y	68	704	Sproul	258290	4562315	18	Y
18	18	Moshannon	204390	4559375	17	Y	69	704	Sproul	259270	4554965	18	Y
19	18	Moshannon	204390	4565255	17	Y	70	704	Sproul	259270	4556435	18	
20	18	Moshannon	204390	4568195	17	Y	71	704	Sproul	259270	4557905	18	Y
21	18	Moshannon	205370	4554965	17	Y	72	704	Sproul	259270	4560845	18	Y
22	18	Moshannon	205370	4556435	17	Y	73	704	Sproul	259270	4563785	18	Y
23	18	Moshannon	205370	4559375	17	Y	74	704	Sproul	260250	4552025	18	Y
24	18	Moshannon	205370	4560845	17	Y	75	704	Sproul	260250	4553495	18	Y
25	18	Moshannon	205370	4562315	17	Y	76	704	Sproul	260250	4557905	18	Y
26	18	Moshannon	205370	4565255	17	Y	77	704	Sproul	260250	4559375	18	Y
27	18	Moshannon	206350	4553495	17	Y	78	704	Sproul	260250	4560845	18	Y
28	18	Moshannon	206350	4556435	17	Y	79	704	Sproul	260250	4563785	18	Y
29	18	Moshannon	206350	4557905	17	Y	80	704	Sproul	261230	4556435	18	Y
30	18	Moshannon	206350	4559375	17	Y	81	704	Sproul	261230	4562315	18	Y
31	18	Moshannon	206350	4560845	17	Y	82	704	Sproul	262210	4553495	18	Y
32	18	Moshannon	206350	4562315	17	Y	83	704	Sproul	262210	4557905	18	
33	18	Moshannon	206350	4563785	17	Y	84	704	Sproul	262210	4559375	18	
34	18	Moshannon	206350	4565255	17	Y	85	704	Sproul	263190	4553495	18	Y
35	18	Moshannon	207330	4557905	17		86	704	Sproul	263190	4556435	18	
36	18	Moshannon	207330	4563785	17	Y	87	29	Susquehannock	263190	4625525	18	Y
37	18	Moshannon	207330	4566725	17	Y	88	29	Susquehannock	263190	4626995	18	Y
38	18	Moshannon	207330	4568195	17	Y	89	704	Sproul	264170	4552025	18	Y
39	18	Moshannon	209290	4559375	17	Y	90	29	Susquehannock	264170	4625525	18	Y
40	18	Moshannon	211250	4565255	17	Y	91	29	Susquehannock	264170	4626995	18	Y
41	54	Elk	221050	4585835	17	Y	92	29	Susquehannock	264170	4628465	18	
42	54	Elk	222030	4587305	17	Y	93	29	Susquehannock	265150	4624055	18	
43	54	Elk	223010	4585835	17	Y	94	29	Susquehannock	265150	4626995	18	Y
44	54	Elk	223990	4584365	17	Y	95	29	Susquehannock	265150	4628465	18	
45	54	Elk	224970	4585835	17	Y	96	29	Susquehannock	266130	4626995	18	Y
46	54	Elk	225950	4584365	17	Y	97	29	Susquehannock	266130	4628465	18	
47	54	Elk	225950	4585835	17	Y	98	29	Susquehannock	267110	4624055	18	
48	704	Sproul	251430	4563785	18	Y	99	29	Susquehannock	267110	4626995	18	Y
49	704	Sproul	251430	4565255	18	Y	100	29	Susquehannock	268090	4624055	18	
50	704	Sproul	253390	4559375	18	Y	101	29	Susquehannock	268090	4626995	18	Y
51	704	Sproul	253390	4565255	18		102	29	Susquehannock	268090	4629935	18	

Block	DMAP Forest	X	Y	Zone S*	Block	DMAP Forest	X	Y	Zone S*
103	29 Susquehannock	269070	4625525	18 Y	155	44 Tioga	287690	4612295	18 Y
104	29 Susquehannock	269070	4626995	18 Y	156	44 Tioga	287690	4613765	18 Y
105	29 Susquehannock	269070	4628465	18	157	44 Tioga	287690	4615235	18 Y
106	29 Susquehannock	270050	4624055	18	158	44 Tioga	288670	4602005	18
107	29 Susquehannock	270050	4628465	18	159	44 Tioga	288670	4607885	18 Y
108	29 Susquehannock	271030	4625525	18 Y	160	44 Tioga	288670	4612295	18 Y
109	29 Susquehannock	271030	4628465	18	161	44 Tioga	288670	4613765	18 Y
110	29 Susquehannock	272010	4622585	18 Y	162	543 Michaux	289650	4428545	18 Y
111	29 Susquehannock	272010	4626995	18 Y	163	543 Michaux	289650	4430015	18 Y
112	99 Tuscarora	277890	4453535	18 Y	164	44 Tioga	289650	4603475	18 Y
113	99 Tuscarora	278870	4452065	18 Y	165	44 Tioga	289650	4604945	18 Y
114	99 Tuscarora	278870	4455005	18 Y	166	44 Tioga	289650	4609355	18 Y
115	99 Tuscarora	279850	4453535	18 Y	167	44 Tioga	289650	4610825	18
116	99 Tuscarora	280830	4453535	18 Y	168	44 Tioga	289650	4613765	18 Y
117	99 Tuscarora	280830	4455005	18 Y	169	44 Tioga	289650	4615235	18 Y
118	99 Tuscarora	280830	4456475	18 Y	170	44 Tioga	289650	4616705	18 Y
119	99 Tuscarora	281810	4457945	18 Y	171	543 Michaux	290630	4428545	18 Y
120	99 Tuscarora	281810	4459415	18 Y	172	44 Tioga	290630	4606415	18 Y
121	99 Tuscarora	282790	4455005	18 Y	173	44 Tioga	290630	4607885	18 Y
122	99 Tuscarora	282790	4456475	18 Y	174	44 Tioga	290630	4609355	18 Y
123	99 Tuscarora	282790	4460885	18 Y	175	44 Tioga	290630	4610825	18 Y
124	44 Tioga	282790	4603475	18	176	44 Tioga	290630	4612295	18 Y
125	44 Tioga	282790	4609355	18	177	44 Tioga	290630	4619645	18 Y
126	99 Tuscarora	283770	4456475	18 Y	178	44 Tioga	291610	4602005	18 Y
127	99 Tuscarora	283770	4457945	18 Y	179	44 Tioga	291610	4603475	18 Y
128	99 Tuscarora	283770	4459415	18 Y	180	44 Tioga	291610	4604945	18 Y
129	44 Tioga	283770	4604945	18 Y	181	44 Tioga	291610	4606415	18 Y
130	44 Tioga	283770	4607885	18 Y	182	44 Tioga	291610	4607885	18 Y
131	44 Tioga	283770	4609355	18 Y	183	44 Tioga	291610	4609355	18 Y
132	44 Tioga	283770	4610825	18	184	44 Tioga	291610	4610825	18
133	44 Tioga	283770	4612295	18 Y	185	44 Tioga	291610	4612295	18 Y
134	44 Tioga	283770	4613765	18 Y	186	44 Tioga	291610	4613765	18
135	99 Tuscarora	284750	4459415	18	187	44 Tioga	291610	4616705	18 Y
136	99 Tuscarora	284750	4460885	18 Y	188	44 Tioga	291610	4619645	18 Y
137	44 Tioga	284750	4606415	18 Y	189	44 Tioga	291610	4621115	18 Y
138	44 Tioga	284750	4609355	18 Y	190	543 Michaux	292590	4430015	18 Y
139	44 Tioga	284750	4610825	18 Y	191	44 Tioga	292590	4600535	18
140	99 Tuscarora	285730	4457945	18 Y	192	44 Tioga	292590	4609355	18 Y
141	44 Tioga	285730	4603475	18	193	44 Tioga	292590	4612295	18
142	44 Tioga	285730	4604945	18	194	44 Tioga	292590	4615235	18
143	44 Tioga	285730	4607885	18 Y	195	44 Tioga	292590	4619645	18 Y
144	44 Tioga	285730	4610825	18 Y	196	44 Tioga	292590	4621115	18 Y
145	44 Tioga	286710	4606415	18	197	44 Tioga	292590	4622585	18 Y
146	44 Tioga	286710	4610825	18 Y	198	44 Tioga	293570	4604945	18 Y
147	44 Tioga	286710	4612295	18 Y	199	44 Tioga	293570	4612295	18 Y
148	44 Tioga	286710	4615235	18 Y	200	44 Tioga	293570	4622585	18 Y
149	543 Michaux	287690	4430015	18 Y	201	44 Tioga	294550	4599065	18
150	44 Tioga	287690	4602005	18	202	44 Tioga	294550	4600535	18 Y
151	44 Tioga	287690	4604945	18	203	44 Tioga	294550	4606415	18
152	44 Tioga	287690	4606415	18	204	44 Tioga	294550	4610825	18 Y
153	44 Tioga	287690	4607885	18 Y	205	44 Tioga	294550	4613765	18
154	44 Tioga	287690	4609355	18 Y	206	44 Tioga	294550	4615235	18

Block DMAP Forest	X	Y	Zone S*	Block DMAP Forest	X	Y	Zone S*		
207	44	Tioga	294550 4618175	18 Y	259	44	Tioga	304350 4606415	18
208	44	Tioga	294550 4619645	18	260	55	Bald Eagle	305330 4527035	18
209	44	Tioga	294550 4621115	18 Y	261	55	Bald Eagle	305330 4528505	18 Y
210	44	Tioga	295530 4602005	18	262	44	Tioga	305330 4606415	18 Y
211	44	Tioga	295530 4603475	18	263	55	Bald Eagle	306310 4527035	18 Y
212	44	Tioga	295530 4610825	18 Y	264	55	Bald Eagle	306310 4529975	18 Y
213	44	Tioga	295530 4622585	18	265	44	Tioga	306310 4606415	18
214	55	Bald Eagle	296510 4524095	18	266	55	Bald Eagle	307290 4531445	18 Y
215	44	Tioga	296510 4602005	18 Y	267	55	Bald Eagle	308270 4529975	18 Y
216	44	Tioga	296510 4604945	18	268	55	Bald Eagle	309250 4528505	18 Y
217	44	Tioga	296510 4606415	18	269	55	Bald Eagle	310230 4529975	18 Y
218	44	Tioga	296510 4607885	18 Y	270	55	Bald Eagle	311210 4529975	18 Y
219	44	Tioga	296510 4609355	18 Y	271	370	Loyalsock	350410 4593185	18 Y
220	55	Bald Eagle	297490 4524095	18	272	370	Loyalsock	350410 4596125	18 Y
221	55	Bald Eagle	297490 4525565	18 Y	273	370	Loyalsock	351390 4591715	18 Y
222	44	Tioga	297490 4602005	18	274	370	Loyalsock	352370 4593185	18 Y
223	44	Tioga	297490 4604945	18 Y	275	370	Loyalsock	352370 4594655	18
224	44	Tioga	297490 4606415	18 Y	276	370	Loyalsock	352370 4596125	18 Y
225	44	Tioga	297490 4607885	18 Y	277	370	Loyalsock	353350 4591715	18 Y
226	44	Tioga	297490 4610825	18	278	370	Loyalsock	354330 4593185	18 Y
227	44	Tioga	298470 4602005	18	279	370	Loyalsock	354330 4594655	18 Y
228	44	Tioga	298470 4604945	18 Y	280	370	Loyalsock	354330 4596125	18 Y
229	44	Tioga	298470 4606415	18 Y	281	370	Loyalsock	355310 4591715	18
230	44	Tioga	298470 4609355	18	282	370	Loyalsock	355310 4596125	18 Y
231	44	Tioga	298470 4610825	18	283	370	Loyalsock	355310 4597595	18 Y
232	44	Tioga	298470 4624055	18	284	370	Loyalsock	356290 4593185	18 Y
233	55	Bald Eagle	299450 4527035	18 Y	285	370	Loyalsock	356290 4594655	18
234	44	Tioga	299450 4602005	18	286	370	Loyalsock	357270 4591715	18
235	44	Tioga	299450 4603475	18	287	370	Loyalsock	357270 4596125	18
236	44	Tioga	299450 4604945	18 Y	288	370	Loyalsock	358250 4593185	18
237	44	Tioga	299450 4606415	18 Y	289	370	Loyalsock	358250 4594655	18
238	44	Tioga	299450 4607885	18 Y	290	266	Delaware	481730 4572605	18 Y
239	44	Tioga	299450 4624055	18	291	266	Delaware	481730 4577015	18 Y
240	55	Bald Eagle	300430 4525565	18	292	266	Delaware	482710 4578485	18
241	55	Bald Eagle	300430 4527035	18 Y	293	266	Delaware	483690 4575545	18 Y
242	44	Tioga	300430 4603475	18	294	266	Delaware	483690 4577015	18
243	44	Tioga	300430 4604945	18	295	266	Delaware	484670 4572605	18 Y
244	44	Tioga	300430 4607885	18	296	266	Delaware	484670 4574075	18 Y
245	44	Tioga	300430 4610825	18 Y	297	266	Delaware	485650 4575545	18 Y
246	55	Bald Eagle	301410 4527035	18 Y	298	266	Delaware	485650 4577015	18 Y
247	44	Tioga	301410 4604945	18	299	266	Delaware	486630 4577015	18 Y
248	44	Tioga	301410 4606415	18	300	29	Susquehannock	261230 4626995	18
249	44	Tioga	301410 4607885	18 Y	301	29	Susquehannock	261230 4628465	18
250	44	Tioga	301410 4609355	18 Y	302	29	Susquehannock	262210 4625525	18
251	44	Tioga	302390 4606415	18 Y	303	29	Susquehannock	262210 4626995	18
252	44	Tioga	302390 4607885	18 Y	304	29	Susquehannock	262210 4628465	18
253	44	Tioga	302390 4609355	18	305	29	Susquehannock	263190 4628465	18
254	55	Bald Eagle	303370 4527035	18 Y	306	29	Susquehannock	264170 4624055	18
255	55	Bald Eagle	303370 4528505	18 Y	307	29	Susquehannock	265150 4625525	18
256	44	Tioga	303370 4606415	18 Y	308	29	Susquehannock	265150 4629935	18
257	55	Bald Eagle	304350 4527035	18	309	29	Susquehannock	266130 4624055	18
258	55	Bald Eagle	304350 4528505	18 Y	310	29	Susquehannock	266130 4625525	18

Block	DMAP Forest	X	Y	Zone S*	Block	DMAP Forest	X	Y	Zone S*
311	29 Susquehannock	266130	4629935	18	363	44 Tioga	287690	4603475	18
312	29 Susquehannock	267110	4622585	18	364	44 Tioga	287690	4610825	18
313	29 Susquehannock	267110	4625525	18	365	44 Tioga	287690	4616705	18 Y
314	29 Susquehannock	267110	4628465	18	366	44 Tioga	288670	4603475	18
315	29 Susquehannock	267110	4629935	18	367	44 Tioga	288670	4604945	18
316	29 Susquehannock	268090	4622585	18	368	44 Tioga	288670	4606415	18
317	29 Susquehannock	268090	4625525	18	369	44 Tioga	288670	4609355	18
318	29 Susquehannock	268090	4628465	18	370	44 Tioga	288670	4610825	18
319	29 Susquehannock	269070	4622585	18	371	44 Tioga	288670	4615235	18
320	29 Susquehannock	269070	4624055	18	372	44 Tioga	288670	4616705	18
321	29 Susquehannock	269070	4629935	18	373	44 Tioga	288670	4618175	18
322	29 Susquehannock	270050	4625525	18	374	44 Tioga	288670	4619645	18
323	29 Susquehannock	270050	4626995	18	375	44 Tioga	289650	4602005	18
324	29 Susquehannock	270050	4629935	18	376	44 Tioga	289650	4606415	18
325	29 Susquehannock	271030	4622585	18	377	44 Tioga	289650	4607885	18
326	29 Susquehannock	271030	4624055	18	378	44 Tioga	289650	4612295	18
327	29 Susquehannock	271030	4626995	18	379	44 Tioga	289650	4618175	18
328	29 Susquehannock	271030	4629935	18	380	44 Tioga	289650	4619645	18 Y
329	29 Susquehannock	272010	4621115	18	381	44 Tioga	290630	4603475	18
330	29 Susquehannock	272010	4624055	18	382	44 Tioga	290630	4604945	18
331	29 Susquehannock	272010	4625525	18	383	44 Tioga	290630	4613765	18
332	29 Susquehannock	272010	4628465	18	384	44 Tioga	290630	4615235	18
333	29 Susquehannock	272990	4621115	18	385	44 Tioga	290630	4616705	18
334	29 Susquehannock	272990	4622585	18	386	44 Tioga	290630	4618175	18
335	29 Susquehannock	273970	4621115	18	387	44 Tioga	290630	4621115	18
336	29 Susquehannock	273970	4622585	18	388	44 Tioga	290630	4622585	18
337	44 Tioga	282790	4604945	18	389	44 Tioga	291610	4615235	18
338	44 Tioga	282790	4606415	18	390	44 Tioga	291610	4618175	18
339	44 Tioga	282790	4607885	18	391	44 Tioga	291610	4622585	18
340	44 Tioga	282790	4610825	18	392	44 Tioga	291610	4624055	18
341	44 Tioga	283770	4603475	18	393	44 Tioga	292590	4602005	18
342	44 Tioga	283770	4606415	18	394	44 Tioga	292590	4603475	18
343	44 Tioga	284750	4603475	18	395	44 Tioga	292590	4604945	18
344	44 Tioga	284750	4604945	18	396	44 Tioga	292590	4606415	18
345	44 Tioga	284750	4607885	18	397	44 Tioga	292590	4607885	18
346	44 Tioga	284750	4612295	18	398	44 Tioga	292590	4610825	18
347	44 Tioga	284750	4613765	18	399	44 Tioga	292590	4613765	18
348	44 Tioga	284750	4615235	18	400	44 Tioga	292590	4616705	18
349	44 Tioga	284750	4616705	18	401	44 Tioga	292590	4618175	18
350	44 Tioga	285730	4606415	18	402	44 Tioga	292590	4624055	18
351	44 Tioga	285730	4609355	18	403	44 Tioga	293570	4599065	18
352	44 Tioga	285730	4612295	18	404	44 Tioga	293570	4600535	18
353	44 Tioga	285730	4613765	18	405	44 Tioga	293570	4602005	18
354	44 Tioga	285730	4615235	18	406	44 Tioga	293570	4603475	18
355	44 Tioga	285730	4616705	18	407	44 Tioga	293570	4606415	18
356	44 Tioga	286710	4602005	18	408	44 Tioga	293570	4607885	18
357	44 Tioga	286710	4603475	18	409	44 Tioga	293570	4609355	18
358	44 Tioga	286710	4604945	18	410	44 Tioga	293570	4610825	18 Y
359	44 Tioga	286710	4607885	18	411	44 Tioga	293570	4613765	18
360	44 Tioga	286710	4609355	18	412	44 Tioga	293570	4615235	18
361	44 Tioga	286710	4613765	18	413	44 Tioga	293570	4616705	18
362	44 Tioga	286710	4616705	18	414	44 Tioga	293570	4618175	18

Block DMAP Forest		X	Y	Zone S*	Block DMAP Forest		X	Y	Zone S*
415	44 Tioga	293570	4619645	18	467	44 Tioga	298470	4625525	18
416	44 Tioga	293570	4621115	18	468	44 Tioga	299450	4609355	18
417	44 Tioga	293570	4624055	18	469	44 Tioga	299450	4610825	18
418	44 Tioga	293570	4625525	18	470	44 Tioga	299450	4612295	18 Y
419	44 Tioga	294550	4602005	18	471	44 Tioga	299450	4622585	18
420	44 Tioga	294550	4603475	18	472	44 Tioga	299450	4625525	18
421	44 Tioga	294550	4604945	18	473	44 Tioga	300430	4602005	18 Y
422	44 Tioga	294550	4607885	18	474	44 Tioga	300430	4606415	18
423	44 Tioga	294550	4609355	18	475	44 Tioga	300430	4609355	18
424	44 Tioga	294550	4612295	18	476	44 Tioga	300430	4612295	18
425	44 Tioga	294550	4616705	18	477	44 Tioga	300430	4624055	18
426	44 Tioga	294550	4622585	18	478	44 Tioga	300430	4625525	18
427	44 Tioga	294550	4624055	18	479	44 Tioga	301410	4603475	18
428	44 Tioga	294550	4625525	18	480	44 Tioga	301410	4610825	18
429	44 Tioga	295530	4599065	18	481	44 Tioga	301410	4612295	18
430	44 Tioga	295530	4600535	18	482	44 Tioga	302390	4603475	18
431	44 Tioga	295530	4604945	18	483	44 Tioga	302390	4604945	18
432	44 Tioga	295530	4606415	18	484	44 Tioga	302390	4610825	18 Y
433	44 Tioga	295530	4607885	18	485	44 Tioga	302390	4612295	18
434	44 Tioga	295530	4609355	18	486	44 Tioga	303370	4604945	18
435	44 Tioga	295530	4612295	18	487	44 Tioga	303370	4607885	18
436	44 Tioga	295530	4613765	18	488	44 Tioga	303370	4609355	18
437	44 Tioga	295530	4615235	18 Y	489	44 Tioga	303370	4610825	18
438	44 Tioga	295530	4616705	18	490	44 Tioga	303370	4612295	18
439	44 Tioga	295530	4618175	18	491	44 Tioga	304350	4604945	18
440	44 Tioga	295530	4619645	18	492	44 Tioga	304350	4607885	18
441	44 Tioga	295530	4621115	18	493	44 Tioga	305330	4604945	18
442	44 Tioga	295530	4624055	18	494	44 Tioga	305330	4607885	18
443	44 Tioga	296510	4600535	18	495	44 Tioga	306310	4604945	18
444	44 Tioga	296510	4603475	18	496	44 Tioga	306310	4607885	18 Y
445	44 Tioga	296510	4610825	18	497	44 Tioga	307290	4606415	18
446	44 Tioga	296510	4612295	18	498	44 Tioga	307290	4607885	18
447	44 Tioga	296510	4613765	18	499	44 Tioga	308270	4606415	18
448	44 Tioga	296510	4615235	18 Y	500	44 Tioga	308270	4607885	18
449	44 Tioga	296510	4619645	18	501	44 Tioga	308270	4609355	18
450	44 Tioga	296510	4621115	18	502	44 Tioga	309250	4609355	18
451	44 Tioga	296510	4622585	18	503	54 Elk	221050	4587305	17
452	44 Tioga	296510	4624055	18	504	54 Elk	221050	4588775	17
453	44 Tioga	297490	4600535	18	505	54 Elk	222030	4584365	17
454	44 Tioga	297490	4603475	18	506	54 Elk	222030	4585835	17
455	44 Tioga	297490	4609355	18	507	54 Elk	222030	4588775	17
456	44 Tioga	297490	4612295	18	508	54 Elk	223010	4584365	17
457	44 Tioga	297490	4613765	18 Y	509	54 Elk	223010	4587305	17
458	44 Tioga	297490	4615235	18	510	54 Elk	223010	4588775	17
459	44 Tioga	297490	4621115	18	511	54 Elk	223990	4585835	17
460	44 Tioga	297490	4622585	18	512	54 Elk	223990	4587305	17
461	44 Tioga	297490	4624055	18	513	54 Elk	224970	4582895	17
462	44 Tioga	298470	4600535	18	514	54 Elk	224970	4584365	17
463	44 Tioga	298470	4603475	18	515	54 Elk	224970	4587305	17
464	44 Tioga	298470	4607885	18	516	54 Elk	226930	4582895	17
465	44 Tioga	298470	4612295	18	517	54 Elk	226930	4584365	17
466	44 Tioga	298470	4622585	18	518	54 Elk	227910	4582895	17

Block DMAP Forest	X	Y	Zone S*	Block DMAP Forest	X	Y	Zone S*	
519	54 Elk	227910	4584365	17	571	266 Delaware	485650 4571135	18
520	370 Loyalsock	350410	4591715	18	572	266 Delaware	485650 4572605	18
521	370 Loyalsock	351390	4590245	18	573	266 Delaware	485650 4574075	18
522	370 Loyalsock	351390	4593185	18	574	266 Delaware	485650 4578485	18
523	370 Loyalsock	351390	4594655	18	575	266 Delaware	486630 4572605	18
524	370 Loyalsock	351390	4596125	18	576	266 Delaware	486630 4574075	18
525	370 Loyalsock	351390	4597595	18	577	266 Delaware	486630 4575545	18
526	370 Loyalsock	352370	4590245	18	578	266 Delaware	486630 4578485	18
527	370 Loyalsock	352370	4591715	18	579	266 Delaware	487610 4577015	18
528	370 Loyalsock	352370	4597595	18	580	266 Delaware	487610 4578485	18
529	370 Loyalsock	353350	4590245	18	581	266 Delaware	487610 4579955	18
530	370 Loyalsock	353350	4593185	18	582	18 Moshannon	201450 4566725	17
531	370 Loyalsock	353350	4594655	18	583	18 Moshannon	202430 4559375	17
532	370 Loyalsock	353350	4596125	18	584	18 Moshannon	202430 4562315	17
533	370 Loyalsock	353350	4597595	18	585	18 Moshannon	202430 4563785	17
534	370 Loyalsock	354330	4590245	18	586	18 Moshannon	202430 4565255	17
535	370 Loyalsock	354330	4591715	18	587	18 Moshannon	202430 4566725	17
536	370 Loyalsock	354330	4597595	18	588	18 Moshannon	202430 4568195	17
537	370 Loyalsock	354330	4599065	18	589	18 Moshannon	202430 4569665	17
538	370 Loyalsock	355310	4590245	18	590	18 Moshannon	202430 4571135	17
539	370 Loyalsock	355310	4593185	18	591	18 Moshannon	203410 4554965	17
540	370 Loyalsock	355310	4594655	18	592	18 Moshannon	203410 4557905	17
541	370 Loyalsock	355310	4599065	18	593	18 Moshannon	203410 4559375	17
542	370 Loyalsock	356290	4590245	18	594	18 Moshannon	203410 4562315	17
543	370 Loyalsock	356290	4591715	18	595	18 Moshannon	203410 4563785	17
544	370 Loyalsock	356290	4596125	18	596	18 Moshannon	203410 4565255	17
545	370 Loyalsock	356290	4597595	18	597	18 Moshannon	203410 4569665	17
546	370 Loyalsock	356290	4599065	18	598	18 Moshannon	204390 4556435	17
547	370 Loyalsock	357270	4590245	18	599	18 Moshannon	204390 4560845	17
548	370 Loyalsock	357270	4593185	18	600	18 Moshannon	204390 4562315	17
549	370 Loyalsock	357270	4594655	18 Y	601	18 Moshannon	204390 4563785	17
550	370 Loyalsock	357270	4597595	18	602	18 Moshannon	204390 4566725	17
551	370 Loyalsock	357270	4599065	18	603	18 Moshannon	204390 4569665	17
552	370 Loyalsock	358250	4590245	18	604	18 Moshannon	205370 4553495	17
553	370 Loyalsock	358250	4591715	18	605	18 Moshannon	205370 4557905	17
554	370 Loyalsock	358250	4596125	18	606	18 Moshannon	205370 4563785	17
555	370 Loyalsock	358250	4597595	18	607	18 Moshannon	205370 4566725	17
556	370 Loyalsock	359230	4591715	18	608	18 Moshannon	205370 4568195	17
557	370 Loyalsock	359230	4593185	18	609	18 Moshannon	205370 4569665	17
558	370 Loyalsock	359230	4596125	18	610	18 Moshannon	206350 4552025	17
559	266 Delaware	481730	4571135	18	611	18 Moshannon	206350 4554965	17
560	266 Delaware	482710	4571135	18	612	18 Moshannon	206350 4566725	17
561	266 Delaware	482710	4572605	18	613	18 Moshannon	207330 4552025	17
562	266 Delaware	482710	4575545	18	614	18 Moshannon	207330 4553495	17
563	266 Delaware	482710	4577015	18	615	18 Moshannon	207330 4554965	17
564	266 Delaware	483690	4571135	18 Y	616	18 Moshannon	207330 4556435	17
565	266 Delaware	483690	4574075	18	617	18 Moshannon	207330 4559375	17
566	266 Delaware	483690	4578485	18	618	18 Moshannon	207330 4560845	17
567	266 Delaware	484670	4571135	18	619	18 Moshannon	207330 4562315	17
568	266 Delaware	484670	4575545	18	620	18 Moshannon	207330 4565255	17
569	266 Delaware	484670	4577015	18	621	18 Moshannon	208310 4557905	17
570	266 Delaware	484670	4578485	18	622	18 Moshannon	208310 4559375	17

Block DMAP Forest		X	Y	Zone S*	Block DMAP Forest		X	Y	Zone S*
623	18 Moshannon	208310	4560845	17	674	704 Sproul	258290	4560845	18
624	18 Moshannon	208310	4563785	17	675	704 Sproul	258290	4563785	18
625	18 Moshannon	208310	4565255	17	676	704 Sproul	258290	4565255	18
626	18 Moshannon	208310	4566725	17	677	704 Sproul	259270	4552025	18
627	18 Moshannon	209290	4557905	17	678	704 Sproul	259270	4553495	18
628	18 Moshannon	209290	4560845	17	679	704 Sproul	259270	4559375	18
629	18 Moshannon	209290	4563785	17	680	704 Sproul	259270	4562315	18
630	18 Moshannon	209290	4565255	17	681	704 Sproul	260250	4554965	18
631	18 Moshannon	210270	4557905	17	682	704 Sproul	260250	4556435	18
632	18 Moshannon	210270	4559375	17	683	704 Sproul	260250	4562315	18
633	18 Moshannon	210270	4560845	17	684	704 Sproul	261230	4552025	18
634	18 Moshannon	210270	4563785	17	685	704 Sproul	261230	4553495	18
635	18 Moshannon	210270	4565255	17	686	704 Sproul	261230	4554965	18
636	18 Moshannon	211250	4557905	17	687	704 Sproul	261230	4557905	18
637	18 Moshannon	211250	4559375	17	688	704 Sproul	261230	4559375	18
638	18 Moshannon	211250	4563785	17	689	704 Sproul	261230	4560845	18
639	18 Moshannon	212230	4557905	17	690	704 Sproul	261230	4563785	18
640	18 Moshannon	212230	4559375	17	691	704 Sproul	262210	4552025	18
641	18 Moshannon	213210	4557905	17	692	704 Sproul	262210	4554965	18
642	18 Moshannon	213210	4559375	17	693	704 Sproul	262210	4556435	18
642	704 Sproul	250450	4563785	18	694	704 Sproul	262210	4560845	18
643	704 Sproul	250450	4565255	18	695	704 Sproul	262210	4562315	18
644	704 Sproul	251430	4562315	18	696	704 Sproul	263190	4552025	18
645	704 Sproul	251430	4566725	18	697	704 Sproul	263190	4554965	18
646	704 Sproul	252410	4557905	18	698	704 Sproul	263190	4557905	18
647	704 Sproul	252410	4559375	18	699	704 Sproul	263190	4559375	18
648	704 Sproul	252410	4562315	18	700	704 Sproul	263190	4560845	18
649	704 Sproul	252410	4563785	18	701	704 Sproul	264170	4553495	18
650	704 Sproul	252410	4565255	18	702	704 Sproul	264170	4554965	18
651	704 Sproul	252410	4566725	18	703	704 Sproul	264170	4556435	18
652	704 Sproul	253390	4557905	18	704	704 Sproul	265150	4552025	18
653	704 Sproul	253390	4560845	18	705	704 Sproul	265150	4553495	18
654	704 Sproul	253390	4562315	18	706	55 Bald Eagle	295530	4524095	18
655	704 Sproul	253390	4563785	18	707	55 Bald Eagle	295530	4525565	18
656	704 Sproul	253390	4566725	18	708	55 Bald Eagle	296510	4522625	18
657	704 Sproul	253390	4568195	18	709	55 Bald Eagle	296510	4525565	18
658	704 Sproul	254370	4557905	18	710	55 Bald Eagle	297490	4522625	18 Y
659	704 Sproul	254370	4559375	18	711	55 Bald Eagle	297490	4527035	18
660	704 Sproul	254370	4562315	18	712	55 Bald Eagle	298470	4524095	18 Y
661	704 Sproul	254370	4563785	18	713	55 Bald Eagle	298470	4525565	18
662	704 Sproul	254370	4565255	18	714	55 Bald Eagle	298470	4527035	18
663	704 Sproul	254370	4568195	18	715	55 Bald Eagle	299450	4524095	18
664	704 Sproul	255350	4565255	18	716	55 Bald Eagle	299450	4525565	18
665	704 Sproul	255350	4568195	18	717	55 Bald Eagle	299450	4528505	18
666	704 Sproul	256330	4566725	18	718	55 Bald Eagle	300430	4524095	18
667	704 Sproul	257310	4560845	18	719	55 Bald Eagle	300430	4528505	18
668	704 Sproul	257310	4562315	18	720	55 Bald Eagle	301410	4524095	18
669	704 Sproul	257310	4563785	18	721	55 Bald Eagle	301410	4525565	18
670	704 Sproul	257310	4565255	18	722	55 Bald Eagle	301410	4528505	18
671	704 Sproul	257310	4566725	18	723	55 Bald Eagle	301410	4529975	18
672	704 Sproul	258290	4554965	18	724	55 Bald Eagle	302390	4525565	18
673	704 Sproul	258290	4556435	18	725	55 Bald Eagle	302390	4527035	18

Block DMAP Forest		X	Y	Zone S*	Block DMAP Forest		X	Y	Zone S*
726	55 Bald Eagle	302390	4528505	18	772	99 Tuscarora	278870	4450595	18
727	55 Bald Eagle	302390	4529975	18	773	99 Tuscarora	278870	4453535	18
728	55 Bald Eagle	303370	4525565	18	774	99 Tuscarora	278870	4456475	18
729	55 Bald Eagle	303370	4529975	18	775	99 Tuscarora	279850	4452065	18
730	55 Bald Eagle	304350	4525565	18 Y	776	99 Tuscarora	279850	4455005	18
731	55 Bald Eagle	304350	4529975	18	777	99 Tuscarora	279850	4456475	18
732	55 Bald Eagle	305330	4525565	18	778	99 Tuscarora	279850	4457945	18
733	55 Bald Eagle	305330	4529975	18	779	99 Tuscarora	280830	4452065	18
734	55 Bald Eagle	306310	4528505	18	780	99 Tuscarora	280830	4457945	18
735	55 Bald Eagle	306310	4531445	18	781	99 Tuscarora	280830	4459415	18
736	55 Bald Eagle	307290	4527035	18 Y	782	99 Tuscarora	281810	4453535	18
737	55 Bald Eagle	307290	4528505	18	783	99 Tuscarora	281810	4455005	18
738	55 Bald Eagle	307290	4529975	18 Y	784	99 Tuscarora	281810	4456475	18
739	55 Bald Eagle	308270	4527035	18	785	99 Tuscarora	281810	4460885	18
740	55 Bald Eagle	308270	4528505	18	786	99 Tuscarora	282790	4453535	18
741	55 Bald Eagle	308270	4531445	18	787	99 Tuscarora	282790	4457945	18
742	55 Bald Eagle	309250	4527035	18	788	99 Tuscarora	282790	4459415	18
743	55 Bald Eagle	309250	4529975	18	789	99 Tuscarora	282790	4462355	18
744	55 Bald Eagle	309250	4531445	18	790	99 Tuscarora	283770	4453535	18
745	55 Bald Eagle	310230	4528505	18	791	99 Tuscarora	283770	4455005	18
746	55 Bald Eagle	311210	4528505	18	792	99 Tuscarora	283770	4460885	18
747	55 Bald Eagle	312190	4528505	18	793	99 Tuscarora	283770	4462355	18
748	55 Bald Eagle	312190	4529975	18	794	99 Tuscarora	284750	4455005	18
749	55 Bald Eagle	313170	4529975	18	795	99 Tuscarora	284750	4456475	18
750	55 Bald Eagle	314150	4529975	18	796	99 Tuscarora	284750	4457945	18
751	931 Gallitzin	177930	4455005	17	797	99 Tuscarora	285730	4456475	18
752	931 Gallitzin	177930	4456475	17	798	99 Tuscarora	285730	4459415	18
753	931 Gallitzin	177930	4457945	17	799	99 Tuscarora	285730	4460885	18
754	931 Gallitzin	178910	4455005	17	800	99 Tuscarora	286710	4460885	18
755	931 Gallitzin	178910	4456475	17	801	543 Michaux	286710	4430015	18
756	931 Gallitzin	179890	4453535	17	802	543 Michaux	287690	4428545	18
757	931 Gallitzin	179890	4457945	17	803	543 Michaux	287690	4431485	18
758	931 Gallitzin	180870	4453535	17	804	543 Michaux	288670	4427075	18
759	931 Gallitzin	180870	4455005	17	805	543 Michaux	288670	4428545	18
760	931 Gallitzin	181850	4453535	17	806	543 Michaux	288670	4430015	18
761	931 Gallitzin	181850	4456475	17	807	543 Michaux	288670	4431485	18
762	931 Gallitzin	181850	4457945	17	808	543 Michaux	289650	4427075	18
763	931 Gallitzin	182830	4453535	17	809	543 Michaux	289650	4431485	18
764	931 Gallitzin	182830	4455005	17	810	543 Michaux	290630	4427075	18
765	931 Gallitzin	183810	4453535	17	811	543 Michaux	290630	4430015	18
766	931 Gallitzin	183810	4456475	17	812	543 Michaux	290630	4431485	18
767	931 Gallitzin	183810	4457945	17	813	543 Michaux	291610	4428545	18
768	99 Tuscarora	276910	4453535	18	814	543 Michaux	291610	4430015	18
769	99 Tuscarora	277890	4450595	18	815	543 Michaux	292590	4428545	18
770	99 Tuscarora	277890	4452065	18	816	543 Michaux	293570	4430015	18
771	99 Tuscarora	277890	4455005	18					

*S - Surveyed