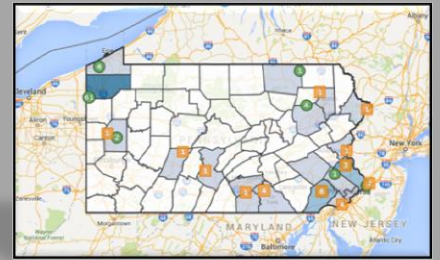




iMapInvasives

Sharing information for strategic management



GIS-Based Online Invasive Species Database and Mapping System

What is iMapInvasives for?

Entering Data – iMapInvasives provides online data entry and management tools for information about invasive species observations, assessments, treatments, and surveys. Users and project leaders tailor data collection to their specific needs through the use of flexible data forms.

Sharing Data – iMapInvasives operates on a state/province level, providing a link for many entities to share invasive species information across organizational boundaries. The Lead Partner Organization (LPO) of each participating state/province works with groups to incorporate bulk uploads of existing data and helps users access the information they need.

Stay Informed – The iMapInvasives Geographic Information System (GIS) framework gives users the power to perform spatial queries, create custom reports and maps, and receive early detection email alerts based on both species and geography (e.g., county or watershed).

Who is iMapInvasives for?

iMapInvasives is designed to support efforts at many levels including state and local agencies, non-profit organizations, volunteers, and many others:

General public – View generalized maps of species to the county or watershed level, and use online forms to report new sightings.

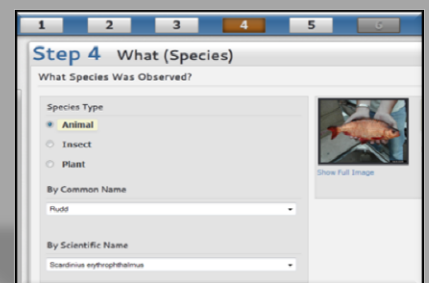
Citizen scientists, educators, & volunteers – Login to report invasive species sightings; view and search state data.

Natural resource managers – Advanced mapping of infestations, surveys, and treatments with GIS-based polygons and detailed field forms; layered, customizable maps and reports; early detection watch lists and email alerts.

Project leaders – Manage data submitted by volunteers and staff.

State administrators– Manage and review state data; batch/bulk upload datasets for partner organizations; customize state/province-specific iMapInvasives module (e.g., look-up tables, GIS layers, species lists); maintain user accounts, automatically direct significant reports to the appropriate authorities, and manage viewing levels for sensitive data.

Federal partners– Work with state administrators to access relevant data and contribute to species maps by providing information from federal lands within the state.



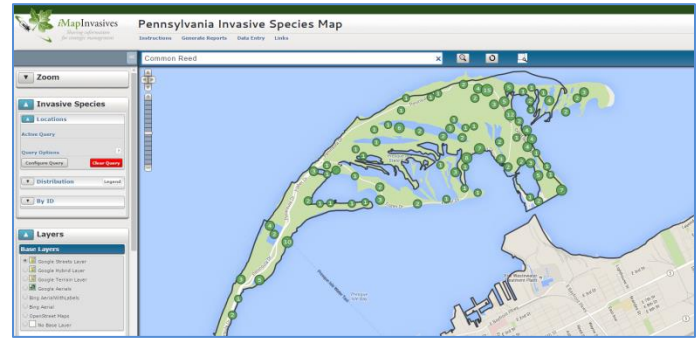
Basic Data Entry

Report infestations quickly and accurately

Observations

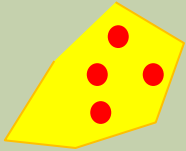
Record infestations as points on the map with step-by-step data entry to make reporting simple for all users.

*New - Report observations with your smartphone!

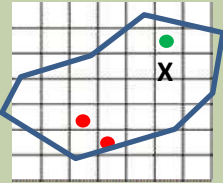


Advanced Data Entry

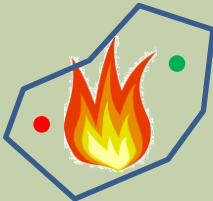
Online polygons plus detailed information in flexible data forms



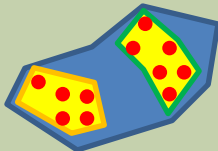
ASSESSMENTS describe the scope of infestations. Can be used to track spread of infestations or treatment effectiveness over time.



SURVEYS track search efforts in specific areas and report whether or not the targeted species were detected. Customized forms make data entry simple for many types of projects, such as aquatic, host tree, and systematic surveys.



TREATMENTS document control efforts with detailed forms specific to treatment type (e.g., mechanical, bio-control, chemical, etc.). Share information about control efforts with other trained iMapInvasives users who have treatment-level access for the state.



INFESTATION MANAGEMENT RECORDS integrate many types of data for a defined, managed population that may include many observations, assessments, and treatments.

To get involved, go to www.imapinvasives.org and:

1. Request a login account
2. Get trained to enter data, either in person, via webinar, or online.
 - Watch an online observation data entry training video at:
<http://www.youtube.com/watch?v=aAlez27twJE&feature=youtu.be>
 - Login to view, search, and map data



iMapInvasives is supported by NatureServe, the New York Natural Heritage Program, The Nature Conservancy, the Florida Natural Areas Inventory, and The Nature Conservancy in Oregon.